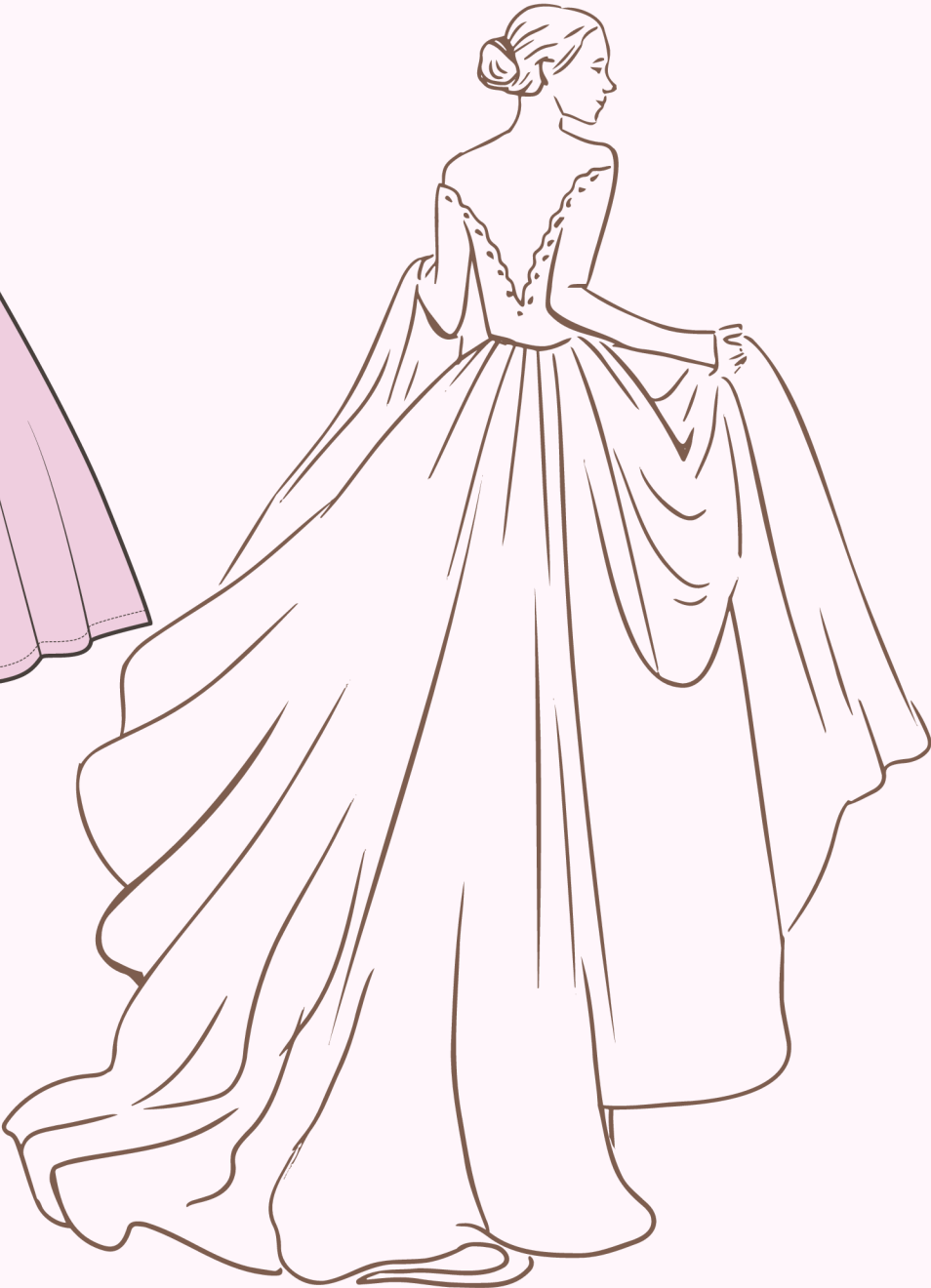


FULL CIRCLE SKIRT - CREATIVE USER GUIDE



Modeliste

Creative

INTRODUCTION TO DESIGNING FULL CIRCLE SKIRTS

Full circle skirts are a classic and timeless garment that exude elegance and charm. They are known for their voluminous, flowing silhouette that is both flattering and versatile. In this guide, we will explore the fundamental steps involved in designing and creating your very own full circle skirt with the use of my full circle skirt blocks, much of the hard work and maths has been done for you!

To begin, it's important to understand the basic structure of a full circle skirt. As the name suggests, the skirt is cut in the shape of a full circle, which allows it to drape beautifully and move gracefully with every step.

The key measurement you will need is the waist circumference, as this will determine the size of the circle's inner opening. Take a look at the range of sizes supplied and choose a waist size close to the one you need. The skirt waist will naturally stretch a little when cut so take this into account. You can also ease the skirt to a more stable waistband to help with structure.

Once you have your measurements, you can trace your block and start drafting the pattern. If you are not working digitally you will need a very large piece of paper, remember to add seam allowances for seams, hems or waistbands.

Enjoy the process and the joy of creating and wearing such a beautiful garment!



Circular Skirts – FABRIC GRAIN

Circular skirts are wonderful garments, quite simple in one way, but quite complex in others. The simplicity of the final garment and its wonderful folds of fullness at the hem disguise the mathematical calculations of Pi and the complexities of dealing with the varying behaviours of the fabric grain.

The garment utilises all the advantages and disadvantages of the warp, weft and bias grain, each fabric you choose will give you a different silhouette and form different folds. To learn more about fabric grain see the links at the end of this guide.

The information below will help you understand and make the most of your skirt.

You can also find an option for a half circle version too, in my Etsy shop - this works wonderfully as a lining pattern piece for the full circle skirt.

GRAIN LINE EXPLANATION:

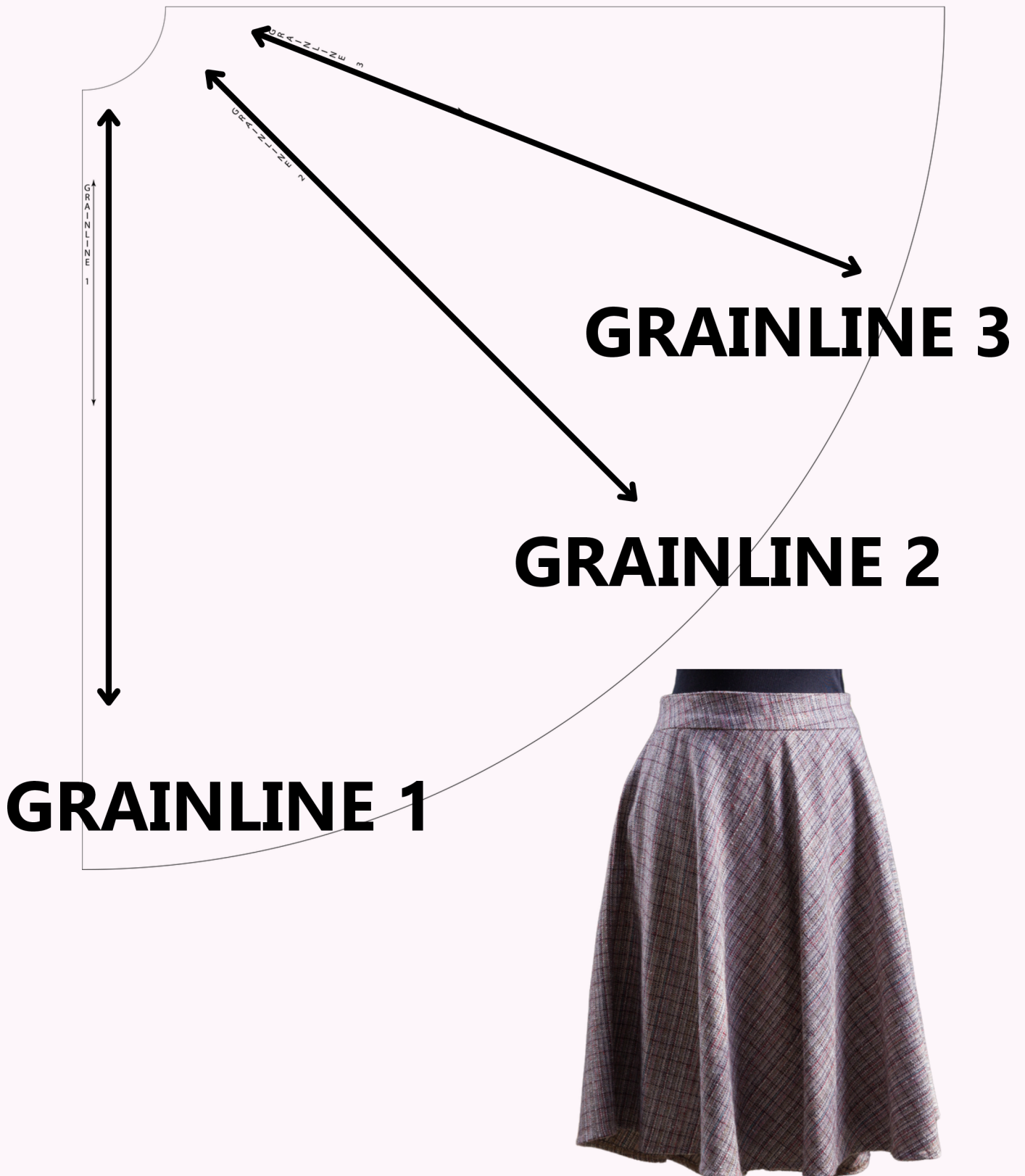
Due to the nature of a circular skirt pattern piece, the pattern section encompasses all the grains within the fabric, that is the straight grain, the cross grain and the bias grain.

The three alternative grainlines illustrated below will each give the skirt a different appearance in terms of where the folds of fullness appear.

- GRAINLINE 1 – has two major points of fullness, one to the side of the center front and one at the side seam in each quarter section.
- GRAINLINE 2- one main area of fullness between center front and side seam in each quarter section
- GRAINLINE 3- has three points of fullness, at the front, the middle and the side in each quarter section.

The next page will show you the options as illustrations and how they are marked on the pattern section -

GRAINLINE OPTIONS



Grainline 1



Grainline 2



Grainline3



Get Creative!

The different options for cutting and assembling your circular skirt, allows you to experiment with different styles and effects.

ASSEMBLY TIPS:

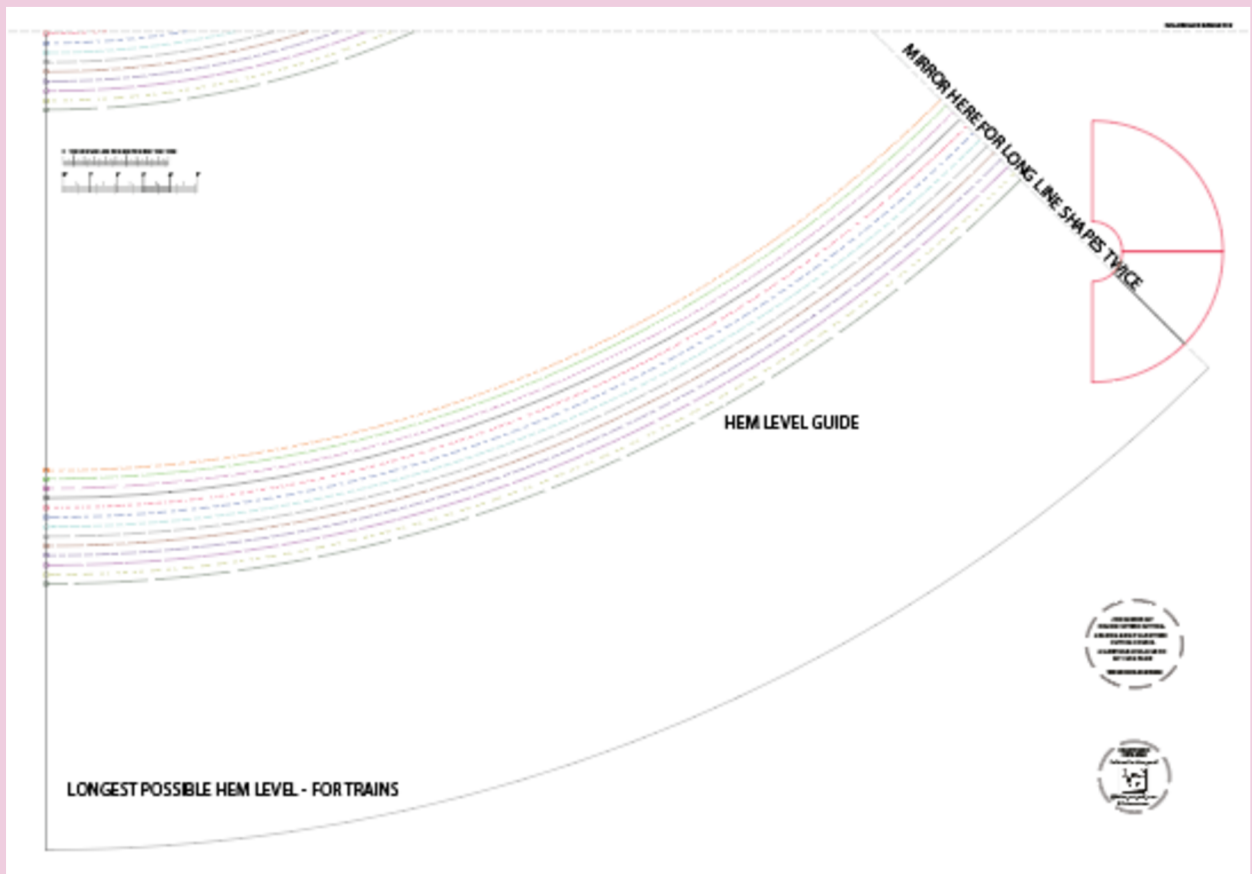
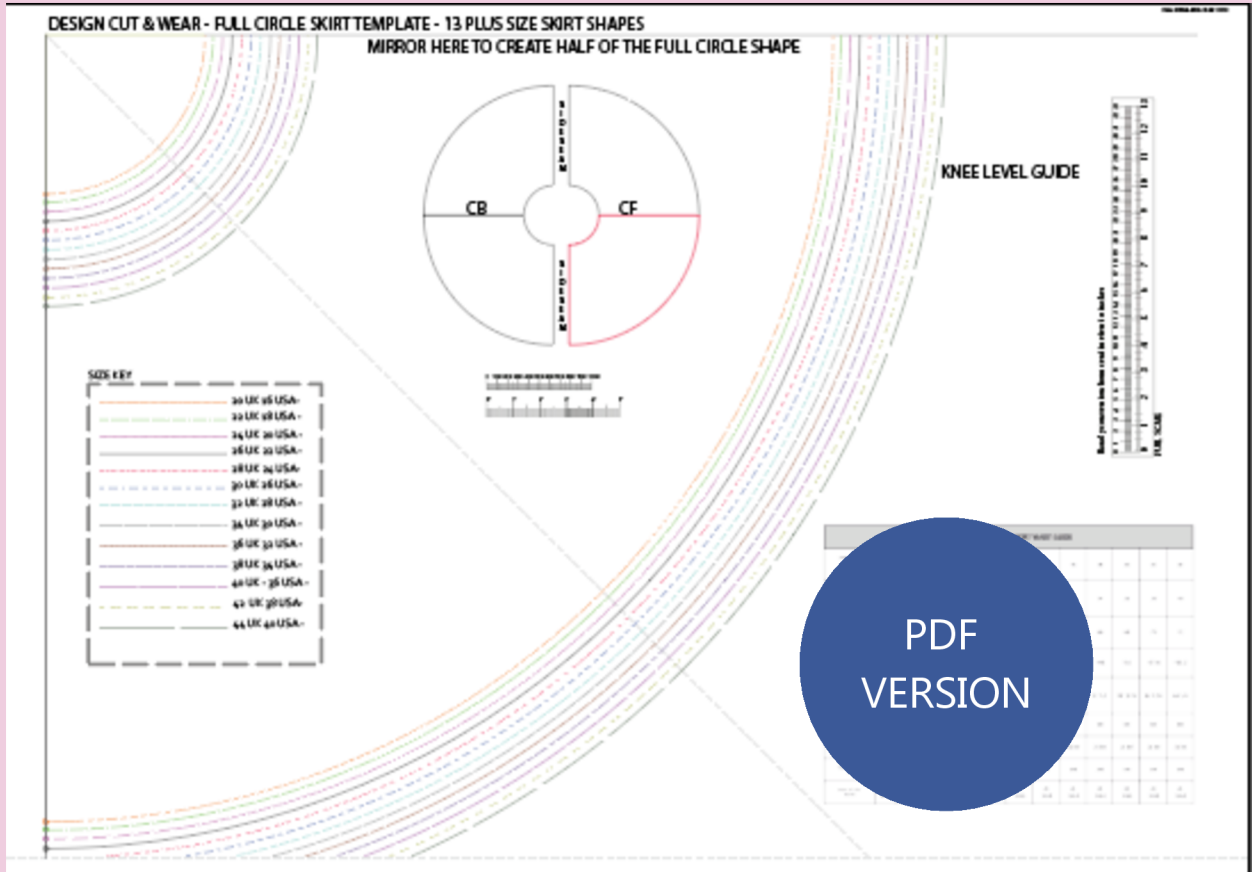
- Fabric Choice: When selecting fabric, consider how it behaves along the different grainlines. Lightweight, flowing fabrics like chiffon or silk will create a soft, romantic drape. In contrast, heavier fabrics like denim or wool will provide structure and shape.
- Hemming: Due to the circular nature of the skirt, hemming can be tricky. Allow the skirt to hang for a day or two before hemming, as the bias sections may stretch slightly. Use a narrow hem or a rolled hem for a clean finish.
- Creative cutting - use wider sections than the finished waist measurement and create pleats or gathers at the waist.

By exploring these options and tips, you can create a circular skirt that perfectly suits your style and showcases your creativity. Remember to experiment and have fun with the process!

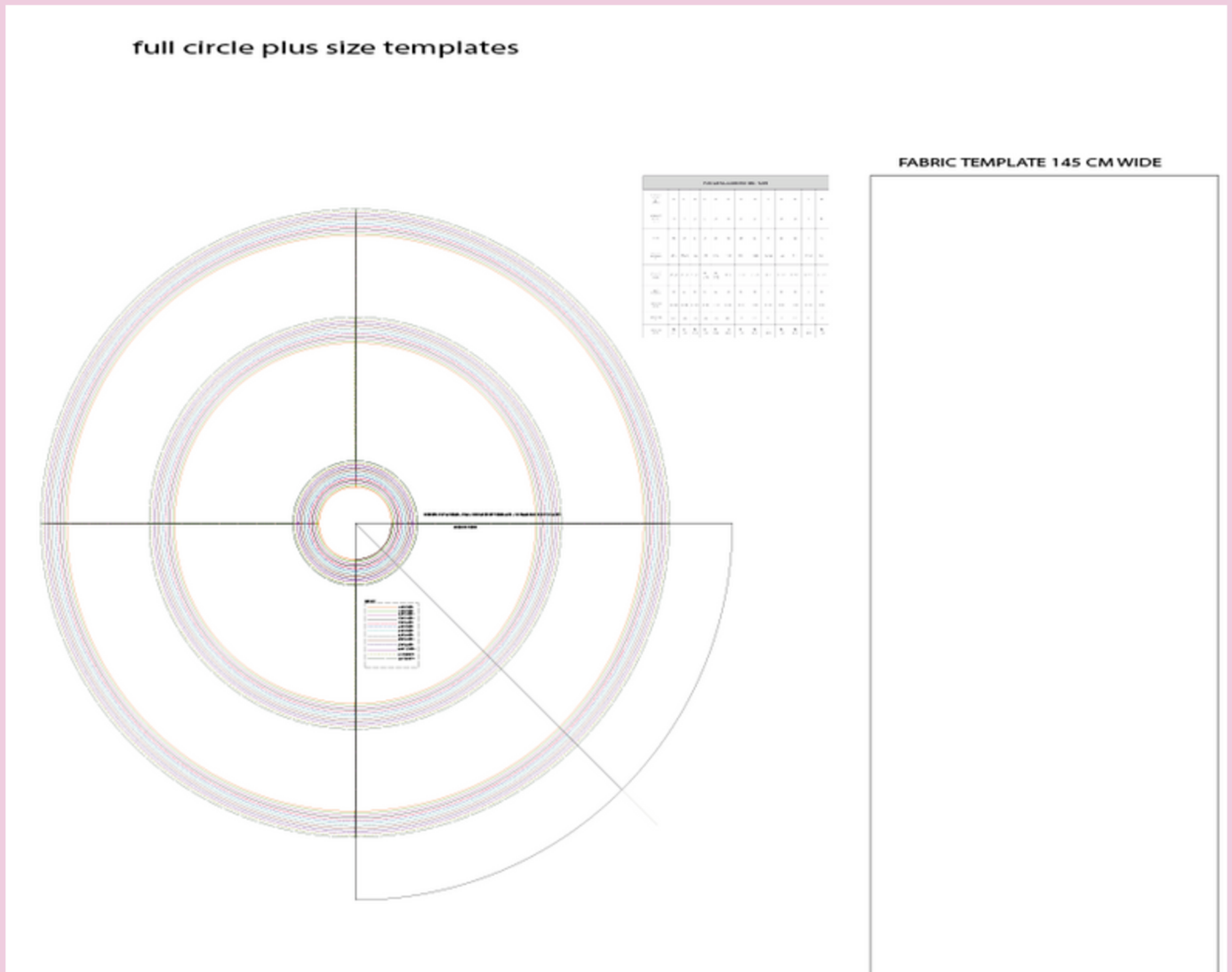


IF YOU HAVE PURCHASED THE PDF COPYSHOP PRINT AT HOME VERSION OR THE READY PRINTED AND POSTED VERSION, THE SKIRT COMES ON TWO A0 SHEETS -

THE SHEETS HAVE BEEN DESIGNED TO BE PLACED TOGETHER AT THE MATCHING LINES TO ALLOW YOU TO CREATE LONGER LENGTH SKIRTS AND BRIDAL TRAINS TOO!



THE AI VERSION OF THE SKIRT COMES WITH COMPLETE PATTERN PIECES
BELOW IS AN IMAGE OF THE AI FILE OPEN IN ADOBE ILLUSTRATOR



As there is no limit on space, the Adobe illustrator version has the full circle pattern piece shapes in the whole range of sizes.

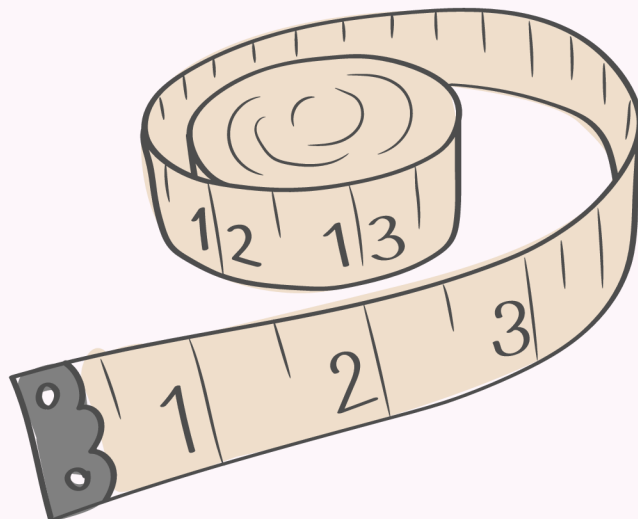
There is also a longer length section provided that is ideal for planning bridal trains.

The rectangle to the side of the pattern shapes is 145 cm (57 1/16") wide and is there as a guide to allow you to plan your pattern piece placement as this is a very important part of full circle pattern creation

*If you have the A4/US Letter version of the block you will have a separate compilation guide to show how to match the sheets.

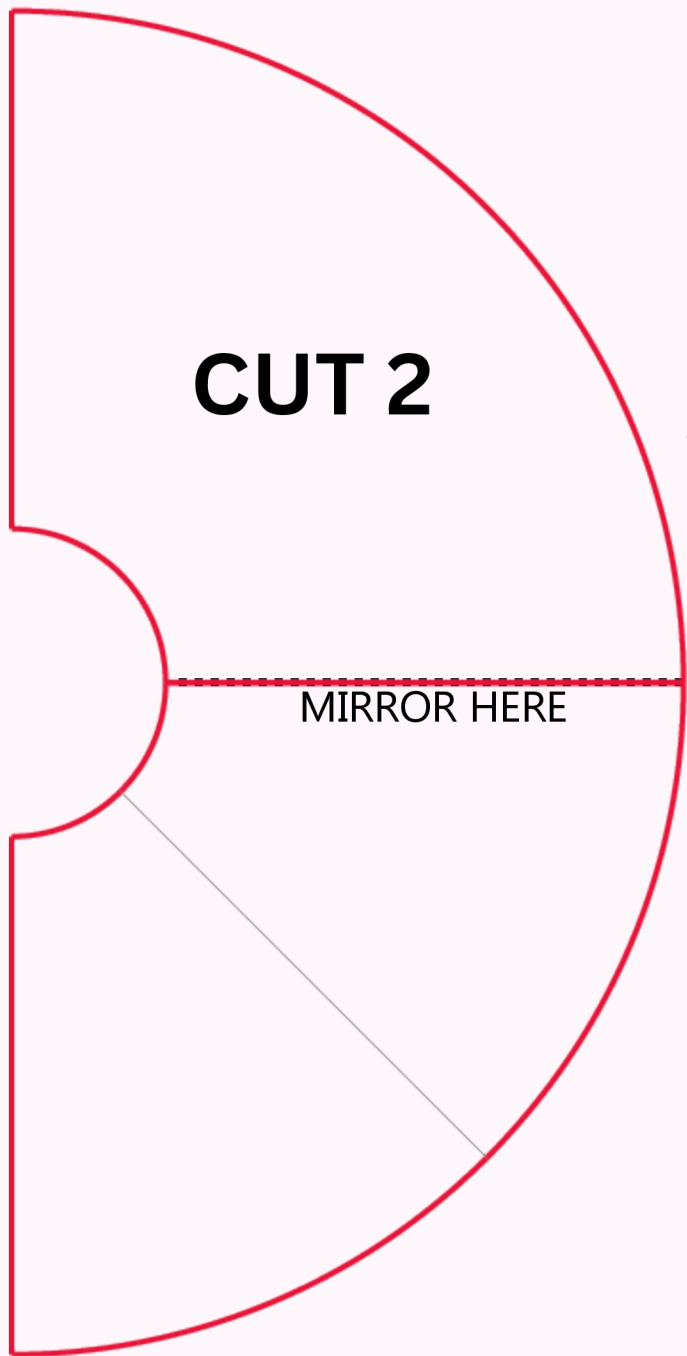
SIZE CHART

PLUS SIZE FULL CIRCLE SKIRT WAIST GUIDE													
APPROXIMATE UK SIZE & AUSTRALIA	20	22	24	26	28	30	32	34	36	38	40	42	44
APPROXIMATE USA SIZE & CANADA	16	18	20	22	24	26	28	30	32	34	36	38	40
EU SIZE	48	50	52	54	56	58	60	62	64	66	68	70	72
BLOCK WAIST MEASUREMENT CM	95.6	100.4	106	112	117.6	123.2	129.2	134.8	140.4	146	152	157.6	163.2
BLOCK WAIST MEASUREMENT INCHES	37 5/8	39 1/2	41 3/4	44 1/16	46 5/16	48 1/2	50 7/8	53 1/16	55 1/4	57 1/2	59 13/16	62 1/16	64 1/4
WAIST TO KNEE CM	60	60	60	60	60	60	60	60	60	60	60	60	60
WAIST TO KNEE INCHES	23 5/8	23 5/8	23 5/8	23 5/8	23 5/8	23 5/8	23 5/8	23 5/8	23 5/8	23 5/8	23 5/8	23 5/8	23 5/8
WAIST TO HEM CM	105	105	105	105	105	105	105	105	105	105	105	105	105
WAIST TO HEM INCHES	41 5/16	41 5/16	41 5/16	41 5/16	41 5/16	41 5/16	41 5/16	41 5/16	41 5/16	41 5/16	41 5/16	41 5/16	41 5/16

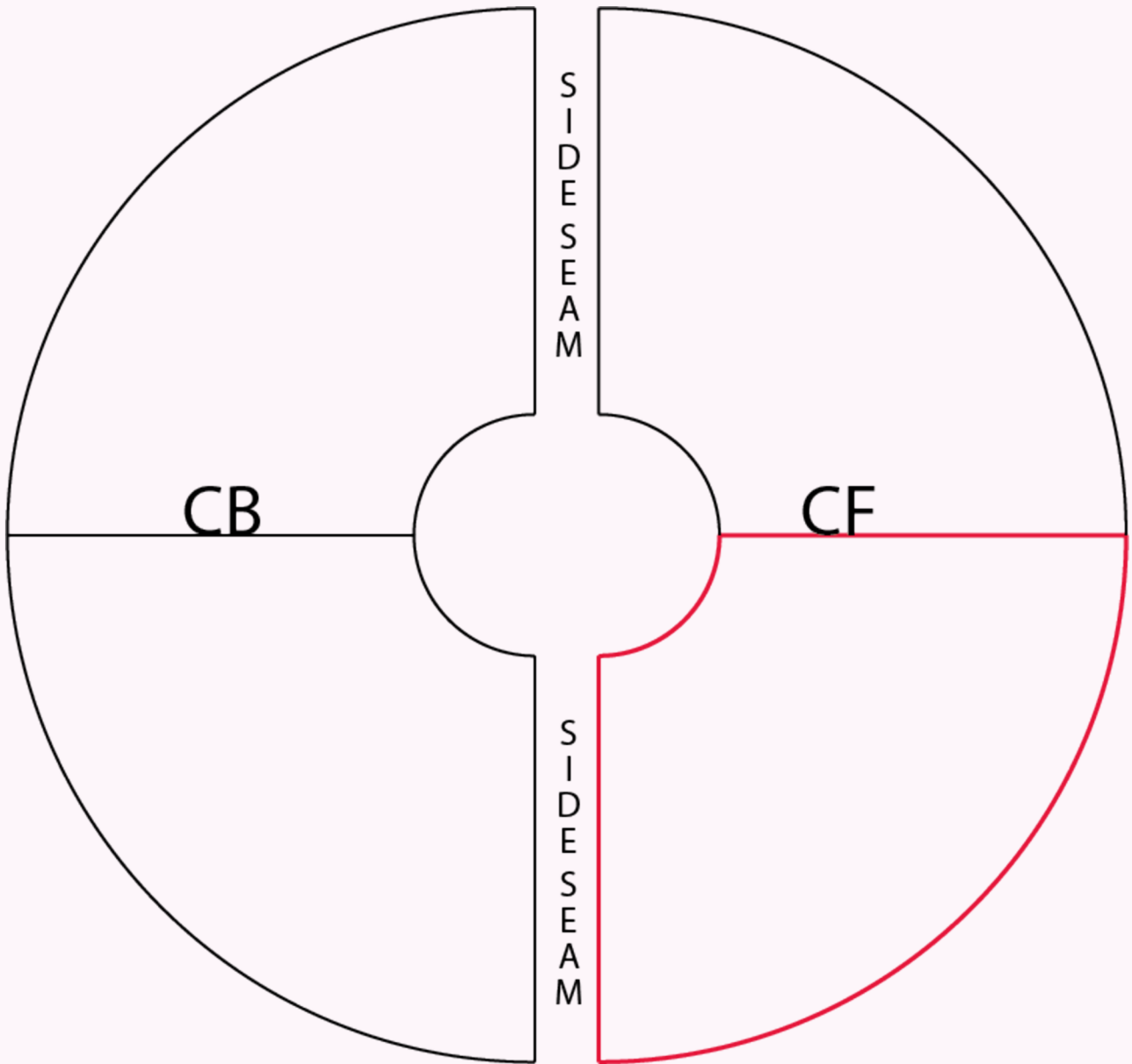


BASIC FULL CIRCLE SHAPE

KNEE LEVEL VERSION



MIRROR THE PATTERN PIECE ON
THE MIRROR LINE
THE PATTERN PIECE WAIST
MEASUREMENT WILL BE HALF THE
FINAL WAIST
MEASUREMENT
YOU SELECTED
FOR THE FULL CIRCLE
SKIRT



THE TOTAL MEASUREMENT OF THE INNER CIRCLE WILL BE YOUR FULL WAIST MEASUREMENT

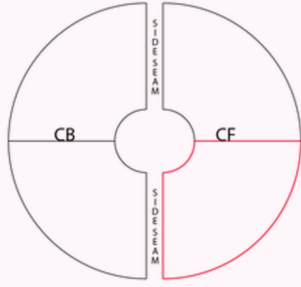
YOU ONLY NEED 1 PATTERN PIECE AS IT CAN BE CUT OUT TWICE

YOU WILL NEED TO ADD SEAM ALLOWANCE TO THE SHAPE BEFORE YOU BEGIN TO SEW.

THESE LINES ARE THE KNEE LEVEL

DESIGN CUT & WEAR - FULL CIRCLE SKIRT TEMPLATE - 13 PLUS SIZE SKIRT SHAPES

MIRROR HERE TO CREATE HALF OF THE FULL CIRCLE SHAPE



KNEE LEVEL GUIDE



SIZE KEY

20 UK 16 USA -
22 UK 18 USA -
24 UK 20 USA -
26 UK 22 USA -
28 UK 24 USA -
30 UK 26 USA -
32 UK 28 USA -
34 UK 30 USA -
36 UK 32 USA -
38 UK 34 USA -
40 UK - 36 USA -
42 UK 38 USA -
44 UK 40 USA -

PLUS SIZE FULL CIRCLE SKIRT WAIST GUIDE

Waist	20	22	24	26	28	30	32	34	36	38	40	42	44
Waist (cm)	81	89	97	104	112	120	127	135	143	151	159	167	175
Waist (in)	32	35	38	41	44	47	50	53	56	59	63	66	69
Waist (cm)	95.6	106.4	116	127.6	137.2	147.2	157.2	167.6	178	188.4	199.2	209.6	220.4
Waist (in)	37.6	42.3	46.1	50.2	54.1	58.3	62.7	67.3	72.1	77.1	82.1	87.3	92.7
Waist (cm)	89	97	105	113	121	129	137	145	153	161	169	177	185
Waist (in)	35	38	41	45	48	51	54	57	60	63	66	69	73
Waist (cm)	100	110	120	130	140	150	160	170	180	190	200	210	220
Waist (in)	40	43	47	51	55	59	63	67	71	75	79	83	87

MIRROR HERE FOR LONG LINE SHAPES TWICE

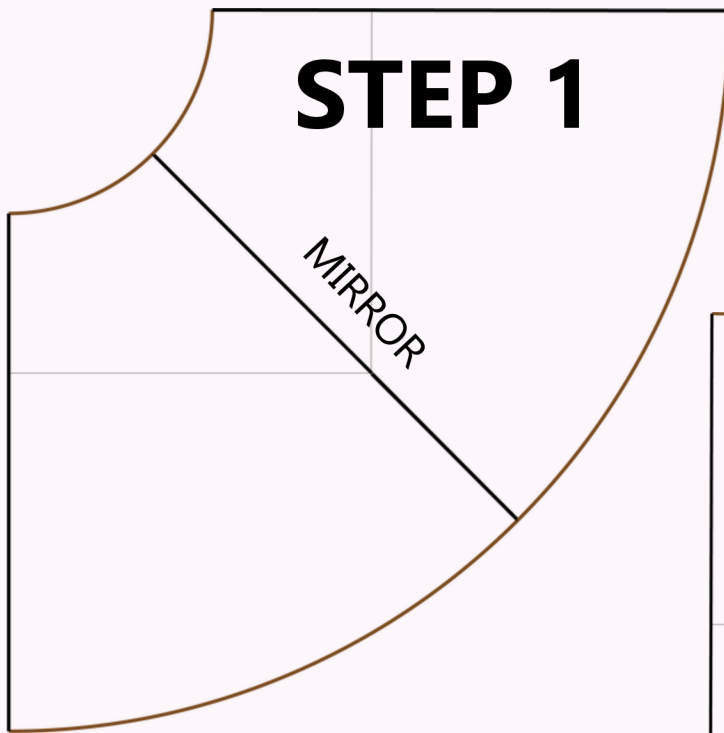
HEM LEVEL GUIDE

LONGEST POSSIBLE HEM LEVEL - FOR TRAINS

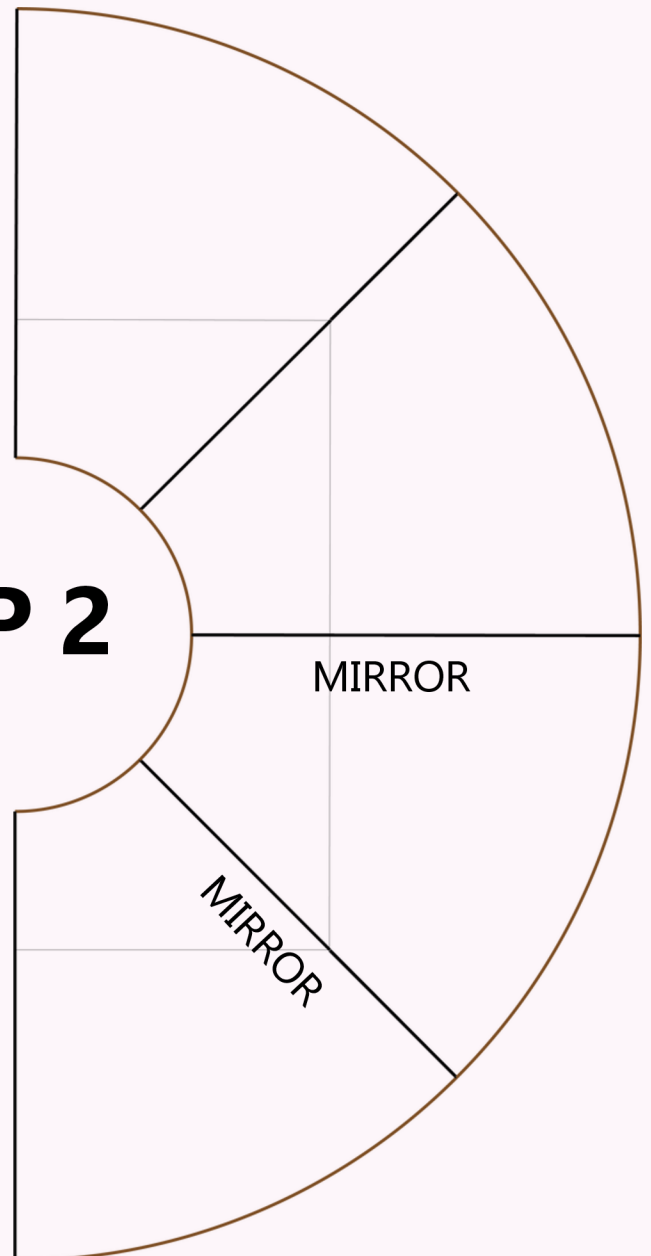


THESE LINES ARE THE HEM LEVEL

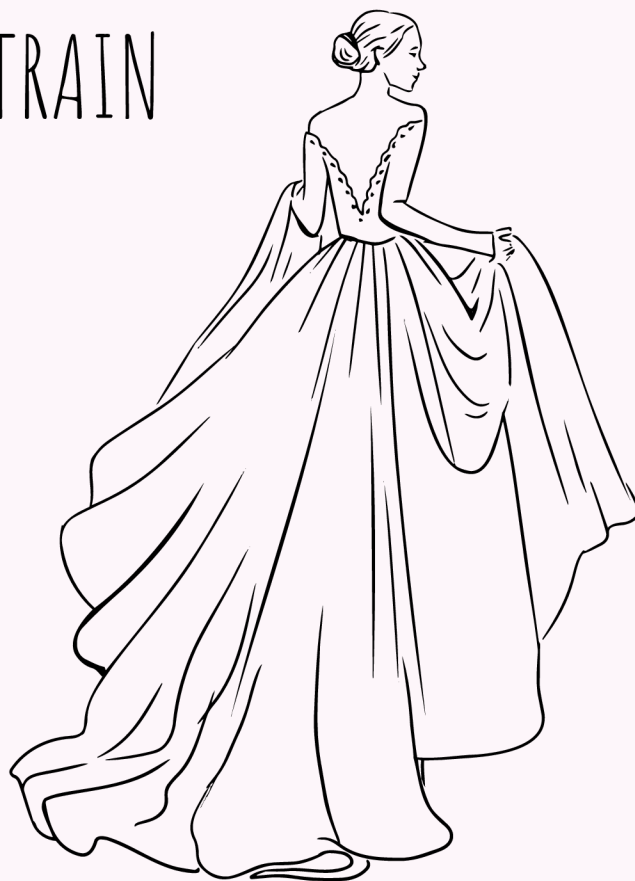
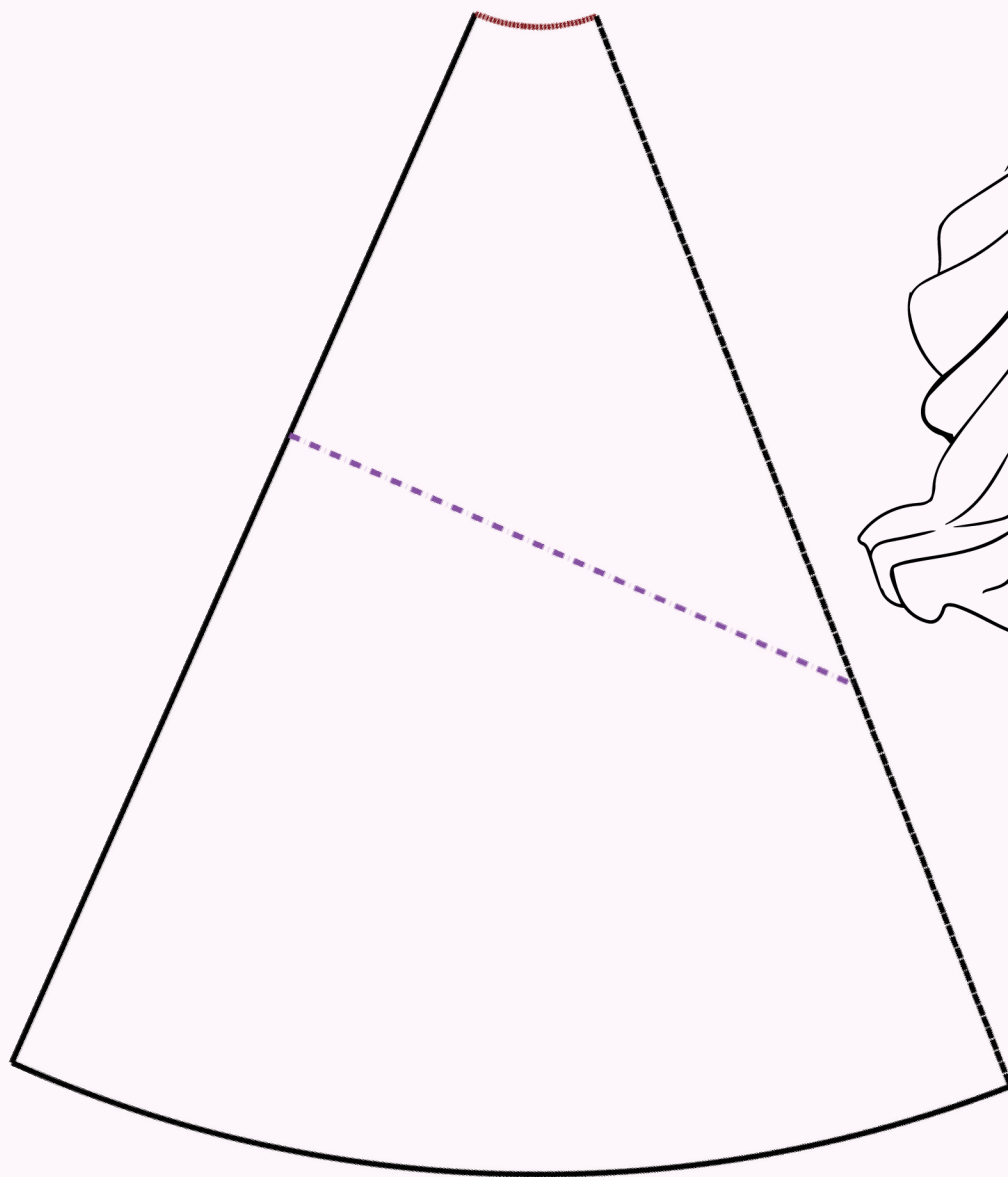
MIRRORING TO CREATE THE LONGER LENGTH FULL CIRCLE SKIRT



STEP 2



CREATING A TRAIN



YOU CAN USE THE LONGEST SECTION ON THE SHEET TO CREATE A TRAIN, USE IT AS A BASE TO CREATE A RANGE OF DIFFERENT STYLES, YOUR IMAGINATION IS THE ONLY LIMIT HERE!

USE AS A STARTING POINT FOR TRAINS, SKIRTS AND
MORE!



**PRO TIP -
CHECK YOUR
FABRIC
WIDTH TO SEE
HOW YOU CAN
BEST PLAN YOUR
SHAPES!**

YOU CAN ALSO CUT MULTIPLE SECTIONS
AND GATHER THEM AT THE WAIST



PRO TIP -

**CUT 2 SKIRTS FOR YOUR WAIST SIZE AND GATHER TO
CREATE A GATHERED
FULL CIRCLE SKIRT**

JOIN ME FOR A PROFESSIONAL COURSE

Why am I qualified to guide you on this exciting journey

Experience

- I worked as a senior fashion lecturer at Manchester's world leading Hollings Faculty, teaching pattern technology and CAD, for over 14 years. Before that I taught pattern cutting part time for 15 years in a technical college.
- Prior to teaching full time I worked as a freelance pattern cutter and grader all over the world with many of the largest clothing companies.
- I have developed clothing courses for universities and trained industry professionals for many years.
- I have lectured in universities all over the world including China, Germany and France.
- I never stop learning, my work is my passion and I would love to share my knowledge with you!

Here are my qualifications & experience

- Clothing Technology Degree from the London College of Fashion.
- Fully qualified teacher - with a C&G teacher training certificate.
- MSc - Master of Science Degree (with distinction) in Clothing (Advanced Manufacture).
- 30 plus years industry experience as a freelance pattern cutter and grader.
- 30 plus years experience as a pattern cutting, design and CAD lecturer from evening classes to teaching at masters level and supervision of PhD students.
- Industry consultant for small fashion startups.
- I am the pattern cutter and grader behind the popular Design Cut & Wear and Modeliste Creative sets of basic blocks (slopers) used all over the world by small fashion business, adventurous dress makers and fashion academies!

Support

- I am there to support you, answer questions as you go along and put in place the things you need to learn and succeed.

LOTS MORE INFO

- I have a pattern cutting blog with lots more info!
- Join my dedicated Facebook group for pattern cutting & design chat!
- My company ethos is to set a realistic price for all my products and in doing so I hope to make them accessible to many. I do not believe in fake introductory discounts, sales and early sign up offers.

COURSES AVAILABLE - CLICK ON THE COURSE TITLE TO LEARN MORE!

PROFESSIONAL PATTERN CUTTING COURSE
PATTERN DESIGN WITH ADOBE ILLUSTRATOR -
PATTERN CUTTING FOR BABIES AND CHILDREN
NEW COURSE - GRADING!

Connect with me on social media...



@design_cut_and_wear

www.facebook.com/designcutandwear



I also have a dedicated facebook group to support creative pattern cutting!

Pattern cutting and design group link.

<https://www.facebook.com/groups/4229406317093311/>



www.youtube.com//modelistecreative



www.pinterest.co.uk/ModelisteCreativeBlog



www.modeliste-creative.com

SOME MORE USEFUL POSTS ON MY BLOG

You will find lots of information on my blog to help you work with my basic blocks, here are a selection of posts that will help.

www.modelistecreative.com

- [WORKING WITH YOUR BASIC BLOCKS - SLOPER - GUIDE TO CREATING A TOILE](#)
 - [SIZING - THE MYTHS AND LEGENDS](#)
 - [LENGTHENING A CIRCULAR SKIRT](#)
 - [FABRIC GRAIN EXPLAINED](#)
- You will also find lots of helpful videos on my YouTube channel
<https://www.youtube.com/@ModelisteCreative>

