

UNDERSTANDING YOUR RAGLAN HOODY BLOCK & FIT ADJUSTMENTS




Style Suggestion



THE AO COPY SHOP VERSIONS CAN BE PRINTED IN COLOUR OR BLACK AND WHITE

DESIGN CUT-4-MEM PROFESSIONAL PATTERNS & BLOCKS THE BEST WAY TO GO! (2023-2024)

Style Suggestion



HOOD OPTION 1

SIZE XS - 2XL

FRONT RELAXED RAGLAN HOODY /SWEATSHIRT - RAGLAN STYLE BLOCK/SLOPER NO SEAM ALLOWANCE ADDED (ONLY - BUY WITH UNDERSTAND LEVEL)

BACK RELAXED RAGLAN HOODY /SWEATSHIRT - RAGLAN STYLE BLOCK/SLOPER NO SEAM ALLOWANCE

SIZE XS - 2XL

SIZE XS - 2XL

SIZE XS - 2XL

WAIST LEVEL

HIP LEVEL

WAIST TO HIP LEVEL 30 CM (7 7/8")

HEM CLIFF - OR RIBBING GUIDE
USE FOR BACK AND FRONT - CAN BE CUT WITH OR WITHOUT SIDE SEAM

1/4" REDUCTION
FOLD LINE

HEM CLIFF - OR RIBBING GUIDE
USE FOR BACK AND FRONT - CAN BE CUT WITH OR WITHOUT SIDE SEAM

1/4" REDUCTION
FOLD LINE

SIZE LINE KEY

- 1/4" REDUCTION
- 1/4" REDUCTION
- 1/4" REDUCTION
- 1/4" REDUCTION
- 1/4" REDUCTION

Handy conversion from inches to centimeters

INCHES

0 1 2 3 4 5 6 7 8 9 10 11 12 13 14 15 16 17 18 19 20 21 22 23 24 25 26 27 28 29 30 31 32 33 34 35 36 37 38 39 40 41 42 43 44 45 46 47 48 49 50

CM

0 2.5 5 7.5 10 12.5 15 17.5 20 22.5 25 27.5 30 32.5 35 37.5 40 42.5 45 47.5 50

1" = 2.54 CM

1/4" = 0.635 CM

1/2" = 1.27 CM

3/4" = 1.905 CM

1" = 2.54 CM

1 1/4" = 3.175 CM

1 1/2" = 3.81 CM

1 3/4" = 4.445 CM

2" = 5.08 CM

2 1/4" = 6.35 CM

2 1/2" = 6.35 CM

2 3/4" = 6.875 CM

3" = 7.62 CM

3 1/4" = 8.635 CM

3 1/2" = 8.89 CM

3 3/4" = 9.405 CM

4" = 10.16 CM

4 1/4" = 11.175 CM

4 1/2" = 11.43 CM

4 3/4" = 11.945 CM

5" = 12.7 CM

5 1/4" = 13.715 CM

5 1/2" = 13.97 CM

5 3/4" = 14.485 CM

6" = 15.24 CM

6 1/4" = 16.255 CM

6 1/2" = 16.51 CM

6 3/4" = 17.025 CM

7" = 17.78 CM

7 1/4" = 18.795 CM

7 1/2" = 19.05 CM

7 3/4" = 19.565 CM

8" = 20.32 CM

8 1/4" = 21.335 CM

8 1/2" = 21.59 CM

8 3/4" = 22.105 CM

9" = 22.86 CM

9 1/4" = 23.875 CM

9 1/2" = 24.13 CM

9 3/4" = 24.645 CM

10" = 25.4 CM

10 1/4" = 26.415 CM

10 1/2" = 26.67 CM

10 3/4" = 27.185 CM

11" = 27.94 CM

11 1/4" = 28.955 CM

11 1/2" = 29.21 CM

11 3/4" = 29.725 CM

12" = 30.48 CM

12 1/4" = 31.495 CM

12 1/2" = 31.75 CM

12 3/4" = 32.265 CM

13" = 33.02 CM

13 1/4" = 34.035 CM

13 1/2" = 34.29 CM

13 3/4" = 34.805 CM

14" = 35.56 CM

14 1/4" = 36.575 CM

14 1/2" = 36.83 CM

14 3/4" = 37.345 CM

15" = 38.1 CM

15 1/4" = 39.115 CM

15 1/2" = 39.37 CM

15 3/4" = 39.885 CM

16" = 40.64 CM

16 1/4" = 41.615 CM

16 1/2" = 41.87 CM

16 3/4" = 42.385 CM

17" = 43.14 CM

17 1/4" = 43.955 CM

17 1/2" = 44.21 CM

17 3/4" = 44.725 CM

18" = 45.48 CM

18 1/4" = 46.495 CM

18 1/2" = 46.75 CM

18 3/4" = 47.265 CM

19" = 48.26 CM

19 1/4" = 49.035 CM

19 1/2" = 49.29 CM

19 3/4" = 49.805 CM

20" = 50.8 CM

20 1/4" = 51.615 CM

20 1/2" = 51.87 CM

20 3/4" = 52.385 CM

21" = 53.34 CM

21 1/4" = 54.115 CM

21 1/2" = 54.37 CM

21 3/4" = 54.885 CM

22" = 55.88 CM

22 1/4" = 56.615 CM

22 1/2" = 56.87 CM

22 3/4" = 57.385 CM

23" = 58.42 CM

23 1/4" = 59.215 CM

23 1/2" = 59.47 CM

23 3/4" = 59.985 CM

24" = 60.96 CM

24 1/4" = 61.715 CM

24 1/2" = 61.97 CM

24 3/4" = 62.485 CM

25" = 63.5 CM

25 1/4" = 64.215 CM

25 1/2" = 64.47 CM

25 3/4" = 64.985 CM

26" = 66.04 CM

26 1/4" = 66.815 CM

26 1/2" = 67.07 CM

26 3/4" = 67.585 CM

27" = 68.58 CM

27 1/4" = 69.315 CM

27 1/2" = 69.57 CM

27 3/4" = 70.085 CM

28" = 71.12 CM

28 1/4" = 71.915 CM

28 1/2" = 72.17 CM

28 3/4" = 72.685 CM

29" = 73.66 CM

29 1/4" = 74.415 CM

29 1/2" = 74.67 CM

29 3/4" = 75.185 CM

30" = 76.2 CM

30 1/4" = 76.915 CM

30 1/2" = 77.17 CM

30 3/4" = 77.685 CM

31" = 78.74 CM

31 1/4" = 79.515 CM

31 1/2" = 79.77 CM

31 3/4" = 80.285 CM

32" = 81.28 CM

32 1/4" = 82.015 CM

32 1/2" = 82.27 CM

32 3/4" = 82.785 CM

33" = 83.82 CM

33 1/4" = 84.515 CM

33 1/2" = 84.77 CM

33 3/4" = 85.285 CM

34" = 86.36 CM

34 1/4" = 87.115 CM

34 1/2" = 87.37 CM

34 3/4" = 87.885 CM

35" = 88.9 CM

35 1/4" = 89.615 CM

35 1/2" = 89.87 CM

35 3/4" = 90.385 CM

36" = 91.44 CM

36 1/4" = 92.215 CM

36 1/2" = 92.47 CM

36 3/4" = 92.985 CM

37" = 93.98 CM

37 1/4" = 94.715 CM

37 1/2" = 94.97 CM

37 3/4" = 95.485 CM

38" = 96.52 CM

38 1/4" = 97.215 CM

38 1/2" = 97.47 CM

38 3/4" = 97.985 CM

39" = 99.06 CM

39 1/4" = 99.815 CM

39 1/2" = 100.07 CM

39 3/4" = 100.585 CM

40" = 101.6 CM

40 1/4" = 102.415 CM

40 1/2" = 102.67 CM

40 3/4" = 103.185 CM

41" = 104.14 CM

41 1/4" = 104.915 CM

41 1/2" = 105.17 CM

41 3/4" = 105.685 CM

42" = 106.68 CM

42 1/4" = 107.415 CM

42 1/2" = 107.67 CM

42 3/4" = 108.185 CM

43" = 109.22 CM

43 1/4" = 109.915 CM

43 1/2" = 110.17 CM

43 3/4" = 110.685 CM

44" = 111.76 CM

44 1/4" = 112.515 CM

44 1/2" = 112.77 CM

44 3/4" = 113.285 CM

45" = 114.3 CM

45 1/4" = 115.015 CM

45 1/2" = 115.27 CM

45 3/4" = 115.785 CM

46" = 116.84 CM

46 1/4" = 116.715 CM

46 1/2" = 116.97 CM

46 3/4" = 117.485 CM

47" = 118.38 CM

47 1/4" = 117.515 CM

47 1/2" = 117.77 CM

47 3/4" = 118.285 CM

48" = 120.92 CM

48 1/4" = 118.415 CM

48 1/2" = 118.67 CM

48 3/4" = 119.185 CM

49" = 122.46 CM

49 1/4" = 119.215 CM

49 1/2" = 119.47 CM

49 3/4" = 119.985 CM

50" = 125.0 CM

50 1/4" = 120.015 CM

50 1/2" = 120.27 CM

50 3/4" = 120.785 CM

51" = 127.54 CM

51 1/4" = 120.815 CM

51 1/2" = 121.07 CM

51 3/4" = 121.585 CM

52" = 129.08 CM

52 1/4" = 121.615 CM

52 1/2" = 121.87 CM

52 3/4" = 122.385 CM

53" = 131.62 CM

53 1/4" = 122.415 CM

53 1/2" = 122.67 CM

53 3/4" = 123.185 CM

54" = 134.16 CM

54 1/4" = 123.215 CM

54 1/2" = 123.47 CM

54 3/4" = 123.985 CM

55" = 136.7 CM

55 1/4" = 124.015 CM

55 1/2" = 124.27 CM

55 3/4" = 124.785 CM

56" = 139.24 CM

56 1/4" = 124.815 CM

56 1/2" = 125.07 CM

56 3/4" = 125.585 CM

57" = 141.78 CM

57 1/4" = 125.615 CM

57 1/2" = 125.87 CM

57 3/4" = 126.385 CM

58" = 144.32 CM

58 1/4" = 126.415 CM

58 1/2" = 126.67 CM

58 3/4" = 127.185 CM

59" = 146.86 CM

59 1/4" = 127.215 CM

59 1/2" = 127.47 CM

59 3/4" = 127.985 CM

60" = 149.4 CM

60 1/4" = 128.015 CM

60 1/2" = 128.27 CM

60 3/4" = 128.785 CM

61" = 151.94 CM

61 1/4" = 128.815 CM

61 1/2" = 129.07 CM

61 3/4" = 129.585 CM

62" = 154.48 CM

62 1/4" = 129.615 CM

62 1/2" = 129.87 CM

62 3/4" = 130.385 CM

63" = 157.02 CM

63 1/4" = 130.415 CM

63 1/2" = 130.67 CM

63 3/4" = 131.185 CM

64" = 159.56 CM

64 1/4" = 131.215 CM

64 1/2" = 131.47 CM

64 3/4" = 131.985 CM

65" = 162.1 CM

65 1/4" = 132.015 CM

65 1/2" = 132.27 CM

65 3/4" = 132.785 CM

66" = 164.64 CM

66 1/4" = 132.815 CM

66 1/2" = 133.07 CM

66 3/4" = 133.585 CM

67" = 167.18 CM

67 1/4" = 133.615 CM

67 1/2" = 133.87 CM

67 3/4" = 134.385 CM

68" = 169.72 CM

68 1/4" = 134.415 CM

68 1/2" = 134.67 CM

68 3/4" = 135.185 CM

69" = 172.26 CM

69 1/4" = 135.215 CM

69 1/2" = 135.47 CM

69 3/4" = 135.985 CM

70" = 174.8 CM

70 1/4" = 136.015 CM

70 1/2" = 136.27 CM

70 3/4" = 136.785 CM

71" = 177.34 CM

71 1/4" = 136.815 CM

71 1/2" = 137.07 CM

71 3/4" = 137.585 CM

72" = 179.88 CM

72 1/4" = 137.615 CM

72 1/2" = 137.87 CM

72 3/4" = 138.385 CM

73" = 182.42 CM

73 1/4" = 138.415 CM

73 1/2" = 138.67 CM

73 3/4" = 139.185 CM

74" = 184.96 CM

74 1/4" = 139.215 CM

74 1/2" = 139.47 CM

74 3/4" = 139.985 CM

75" = 187.5 CM

75 1/4" = 140.015 CM

75 1/2" = 140.27 CM

75 3/4" = 140.785 CM

76" = 190.04 CM

76 1/4" = 140.815 CM

76 1/2" = 141.07 CM

76 3/4" = 141.585 CM

77" = 192.58 CM

77 1/4" = 141.615 CM

77 1/2" = 141.87 CM

77 3/4" = 142.385 CM

78" = 195.12 CM

78 1/4" = 142.415 CM

78 1/2" = 142.67 CM

78 3/4" = 143.185 CM

79" = 197.66 CM

79 1/4" = 143.215 CM

79 1/2" = 143.47 CM

79 3/4" = 143.985 CM

80" = 200.2 CM

80 1/4" = 144.015 CM

80 1/2" = 144.27 CM

80 3/4" = 144.785 CM

81" = 202.74 CM

81 1/4" = 144.815 CM

81 1/2" = 145.07 CM

81 3/4" = 145.585 CM

82" = 205.28 CM

82 1/4" = 145.615 CM

82 1/2" = 145.87 CM

82 3/4" = 146.385 CM

83" = 207.82 CM

83 1/4" = 146.415 CM

83 1/2" = 146.67 CM

83 3/4" = 147.185 CM

84" = 210.36 CM

84 1/4" = 147.215 CM

84 1/2" = 147.47 CM

84 3/4" = 147.985 CM

85" = 212.9 CM

85 1/4" = 148.015 CM

85 1/2" = 148.27 CM

85 3/4" = 148.785 CM

86" = 215.44 CM

86 1/4" = 148.815 CM

86 1/2" = 149.07 CM

86 3/4" = 149.585 CM

87" = 217.98 CM

87 1/4" = 149.615 CM

87 1/2" = 149.87 CM

87 3/4" = 150.385 CM

88" = 220.52 CM

88 1/4" = 150.415 CM

88 1/2" = 150.67 CM

88 3/4" = 151.185 CM

89" = 223.06 CM

89 1/4" = 151.215 CM

89 1/2" = 151.47 CM

89 3/4" = 151.985 CM

90" = 225.6 CM

90 1/4" = 152.015 CM

90 1/2" = 152.27 CM

90 3/4" = 152.785 CM

91" = 228.14 CM

91 1/4" = 152.815 CM

91 1/2" = 153.07 CM

91 3/4" = 153.585 CM

92" = 230.68 CM

92 1/4" = 153.615 CM

92 1/2" = 153.87 CM

92 3/4" = 154.385 CM

93" = 233.22 CM

93 1/4" = 154.415 CM

93 1/2" = 154.67 CM

93 3/4" = 155.185 CM

94" = 235.76 CM

94 1/4" = 155.215 CM

94 1/2" = 155.47 CM

94 3/4" = 155.985 CM

95" = 238.3 CM

95 1/4" = 156.015 CM

95 1/2" = 156.27 CM

95 3/4" = 156.785 CM

96" = 240.84 CM

96 1/4" = 156.815 CM

96 1/2" = 157.07 CM

96 3/4" = 157.585 CM

97" = 243.38 CM

97 1/4" = 157.615 CM

97 1/2" = 157.87 CM

97 3/4" = 158.385 CM

98" = 245.92 CM

98 1/4" = 158.415 CM

98 1/2" = 158.67 CM

98 3/4" = 159.185 CM

99" = 248.46 CM

99 1/4" = 159.215 CM

99 1/2" = 158.97 CM

99 3/4" = 159.685 CM

100" = 251.0 CM

100 1/4" = 160.015 CM

100 1/2" = 160.27 CM

100 3/4" = 160.785 CM

101" = 253.54 CM

101 1/4" = 160.815 CM

101 1/2" = 161.07 CM

101 3/4" = 161.585 CM

102" = 256.08 CM

102 1/4" = 161.615 CM

102 1/2" = 161.87 CM

102 3/4" = 162.385 CM

103" = 258.62 CM

103 1/4" = 162.415 CM

103 1/2" = 162.67 CM

103 3/4" = 163.185 CM

104" = 261.16 CM

104 1/4" = 163.215 CM

104 1/2" = 162.97 CM

104 3/4" = 163.685 CM

105" = 263.7 CM

105 1/4" = 164.015 CM

105 1/2" = 163.27 CM

105 3/4" = 164.185 CM

106" = 266.24 CM

106 1/4" = 164.815 CM

106 1/2" = 163.57 CM

106 3/4" = 164.685 CM

107" = 268.78 CM

107 1/4" = 165.615 CM

107 1/2" = 163.87 CM

107 3/4" = 165.185 CM

108" = 271.32 CM

108 1/4" = 166.415 CM

108 1/2" = 164.17 CM

108 3/4" = 165.685 CM

109" = 273.86 CM

109 1/4" = 167.215 CM

109 1/2" = 164.47 CM

109 3/4" = 166.185 CM

110" = 276.4 CM

110 1/4" = 168.015 CM

110 1/2" = 164.77 CM

110 3/4" = 166.685 CM

111" = 278.94 CM

111 1/4" = 168.815 CM

111 1/2" = 165.07 CM

111 3/4" = 167.185 CM

112" = 281.48 CM

112 1/4" = 169.615 CM

112 1/2" = 165.37 CM

112 3/4" = 167.685 CM

113" = 284.02 CM

113 1/4" = 170.415 CM

113 1/2" = 165.67 CM

113 3/4" = 168.185 CM

114" = 286.56 CM

114 1/4" = 171.215 CM

114 1/2" = 165.97 CM

114 3/4" = 168.685 CM

115" = 289.1 CM

115 1/4" = 172.015 CM

115 1/2" = 166.27 CM

115 3/4" = 169.185 CM

116" = 291.64 CM

116 1/4" = 172.815 CM

116 1/2" = 166.57 CM

116 3/4" = 169.685 CM

117" = 294.18 CM

117 1/4" = 173.615 CM

117 1/2" = 166.87 CM

117 3/4" = 170.185 CM

118" = 296.72 CM

118 1/4" = 174.415 CM

118 1/2" = 167.17 CM

118 3/4" = 170.685 CM

119" = 299.26 CM

119 1/4" = 175.215 CM

119 1/2" = 167.47 CM

119 3/4" = 171.185 CM

120" = 301.8 CM

120 1/4" = 176.015 CM

120 1/2" = 167.77 CM

120 3/4" = 171.685 CM

121" = 304.34 CM

121 1/4" = 176.815 CM

121 1/2" = 168.07 CM

121 3/4" = 172.185 CM

122" = 306.88 CM

122 1/4" = 177.615 CM

122 1/2" = 168.37 CM

122 3/4" = 172.685 CM

123" = 309.42 CM

123 1/4" = 178.415 CM

123 1/2" = 168.67 CM

123 3/4" = 173.185 CM

124" = 311.96 CM

124 1/4" = 179.215 CM

124 1/2" = 168.97 CM

124 3/4" = 173.685 CM

125" = 314.5 CM

125 1/4" = 180.015 CM

125 1/2" = 169.27 CM

125 3/4" = 174.185 CM

126" = 317.04 CM

126 1/4" = 180.815 CM

126 1/2" = 169.57 CM

126 3/4" = 174.685 CM

127" = 319.58 CM

127 1/4" = 181.615 CM

127 1/2" = 169.87 CM

127 3/4" = 175.185 CM

128" = 322.12 CM

128 1/4" = 182.415 CM

128 1/2" = 170.17 CM

128 3/4" = 175.685 CM

129" = 324.66 CM

129 1/4" = 183.215 CM

129 1/2" = 170.47 CM

129 3/4" = 176.185 CM

130" = 327.2 CM

130 1/4" = 184.015 CM

130 1/2" = 170.77 CM

130 3/4" = 176.685 CM

131" = 329.74 CM

131 1/4" = 184.815 CM

131 1/2" = 171.07 CM

131 3/4" = 177.185 CM

132" = 332.28 CM

132 1/4" = 185.615 CM

132 1/2" = 171.37 CM

132 3/4" = 177.685 CM

133" = 334.82 CM

133 1/4" = 186.415 CM

133 1/2" = 171.67 CM

133 3/4" = 178.185 CM

134" = 337.36 CM

134 1/4" = 187.215 CM

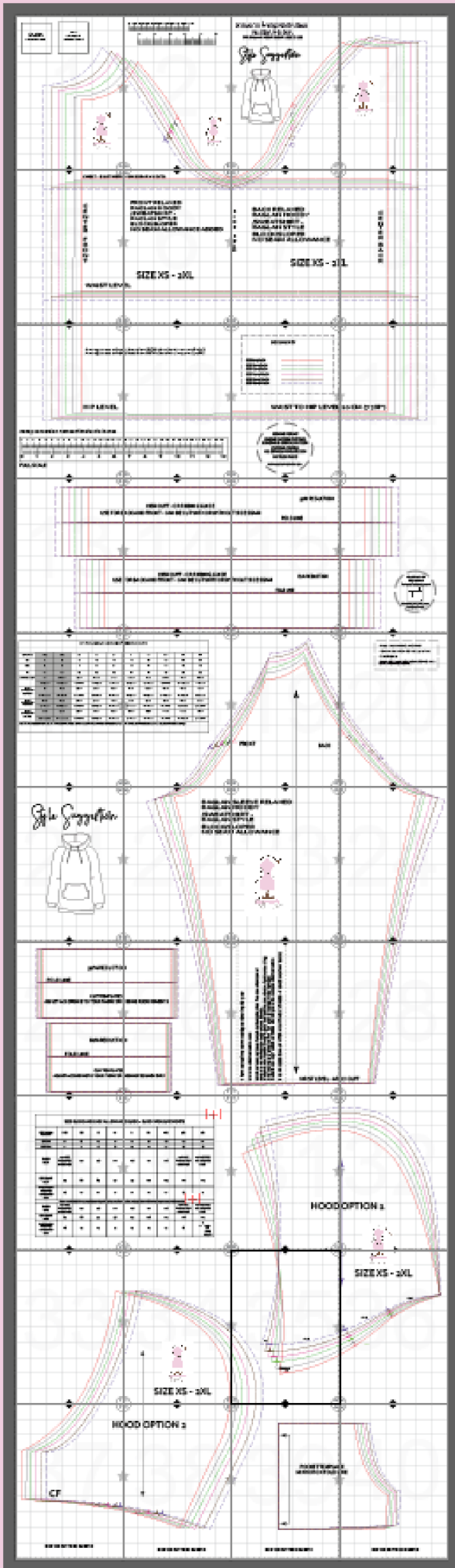
134 1/2" = 171.97 CM

134 3/4" = 178.685 CM

135" = 339.9 CM

135 1/4" = 188.015 CM

135 1/2" = 172.27



THE A/4 - US
 LETTER VERSION
 CAN BE PRINTED AT HOME



GENERAL SIZE CHART

Please see your block sheet and the next page for a larger clearer image of this chart

DESIGN CUT & WEAR- GENERAL MEASUREMENT & SIZE GUIDE										
SIZE ALPHA	3XS	2XS	XS	S	M	L	XL	2XL	3XL	4XL
UK	4	6	8	10	12	14	16	18	20	22
USA	0	2	4	6	8	10	12	14	16	18
EU	32	34	36	38	40	42	44	46	48	50
NAPE TO WAIST	39	39.5 cm	40 cm	40.5 cm	41 cm	41.5 cm	42 cm	42.5 cm	43 cm	43.5 cm
	15 3/8 inch	15 9/16 inch	15 3/4 inch	15 7/8 inch	16 1/8 inch	16 3/8 inch	16 1/2 inch	16 3/4 inch	16 15/16 inch	17 1/8 inch
TO FIT APPROXIMATE BUST SIZE	70	75 cm	80 cm	85 cm	90 cm	95 cm	100 cm	105 cm	110 cm	115 cm
	27 9/16 inch	29 1/2 inch	31 1/2 inch	33 1/2 inch	35 3/4 inch	37 3/8 inch	39 3/8 inch	41 5/16 inch	43 5/16 inch	45 1/4 inch
TO FIT APPROXIMATE WAIST SIZE	52 cm	57 cm	62 cm	67 cm	72 cm	77 cm	82 cm	87 cm	92 cm	97 cm
	20 1/2 inch	22 7/16 inch	24 3/8 inch	26 3/8 inch	28 3/8 inch	30 1/4 inch	32 1/4 inch	34 1/4 inch	36 1/4 inch	38 3/16 inch
TO FIT APPROXIMATE HIP SIZE	78 cm	83 cm	88 cm	93 cm	98 cm	103 cm	108cm	113 cm	118cm	123 cm
	30 11/16 inch	32 11/16 inch	34 5/8 inch	36 5/8 inch	38 5/8 inch	40 1/2 inch	42 1/2 inch	44 1/2 inch	46 7/16 inch	48 7/16 inch
NOTE: The measurements above have been rounded to the nearest whole number or fraction of an inch. For larger sizes please refer to my plus size blocks range.										

Ease Explained - Ease is the difference between the block (sloper) or pattern you are using, and the body you intend to fit. The block needs to be bigger than the body it is intended to fit (where woven fabrics are concerned).

Ease is the extra present in a block or sloper or pattern to allow for movement, bending, breathing etc. This is an oversized, loose casual style and has extra ease.

NOTE- In the calculations supplied I use the Design Cut & Wear size chart to calculate the ease present in the block. You may be fitting an actual body that has a different measurement to the size chart above, or your usual size chart may be slightly different to the size chart used. In this case the ease measurement will need to be assessed and recalculated.

Please always be guided by the actual block measurements and not the size label attached to the block.

Ease is a personal preference and some designers prefer less or more ease. Basic blocks are designed with moderate ease to allow for easy adjustment.

Please see my blog page for lots more information on this topic.

DESIGN CUT & WEAR - GENERAL MEASUREMENT & SIZE GUIDE

SIZE ALPHA	3XS	2XS	XS	S	M	L	XL	2XL	3XL	4XL
UK	4	6	8	10	12	14	16	18	20	22
USA	0	2	4	6	8	10	12	14	16	18
EU	32	34	36	38	40	42	44	46	48	50
NAPE TO WAIST	39	39.5 cm	40 cm	40.5 cm	41 cm	41.5 cm	42 cm	42.5 cm	43 cm	43.5 cm
	15 3/8 inch	15 9/16 inch	15 3/4 inch	15 7/8 inch	16 1/8 inch	16 3/8 inch	16 1/2 inch	16 3/4 inch	16 15/16 inch	17 1/8 inch
TO FIT APPROXIMATE BUST SIZE	70	75 cm	80 cm	85 cm	90 cm	95 cm	100 cm	105 cm	110 cm	115 cm
	27 9/16 inch	29 1/2 inch	31 1/2 inch	33 1/2 inch	35 3/4 inch	37 3/8 inch	39 3/8 inch	41 5/16 inch	43 5/16 inch	45 1/4 inch
TO FIT APPROXIMATE WAIST SIZE	52 cm	57 cm	62 cm	67 cm	72 cm	77 cm	82 cm	87 cm	92 cm	97 cm
	20 1/2 inch	22 7/16 inch	24 3/8 inch	26 3/8 inch	28 3/8 inch	30 1/4 inch	32 1/4 inch	34 1/4 inch	36 1/4 inch	38 3/16 inch
TO FIT APPROXIMATE HIP SIZE	78 cm	83 cm	88 cm	93 cm	98 cm	103 cm	108 cm	113 cm	118 cm	123 cm
	30 11/16 inch	32 11/16 inch	34 5/8 inch	36 5/8 inch	38 5/8 inch	40 1/2 inch	42 1/2 inch	44 1/2 inch	46 7/16 inch	48 7/16 inch

NOTE: The measurements above have been rounded to the nearest whole number or fraction of an inch. For larger sizes please refer to my plus size blocks range.







BLOCK MEASUREMENTS CHART

SIZE GUIDE AND EASE ALLOWANCE GUIDE – BLOCK MEASUREMENTS									
SIZE ALPHA NUMERIC	XXS	XS	S	M	L	XL	2XL	3XL	4XL
SIZE UK	6	8	10	12	14	16	18	20	22
SIZE USA	2	4	6	8	10	12	14	16	18
BLOCK BUST	101 - USE THE XS FOR MORE EASE	101	106	111	116	121	126	126 - USE THE 2XL FOR LESS EASE	126 - USE THE 2XL FOR LESS EASE
SIZE CHART BUST	75	80	85	90	95	100	105	110	115
EASE WHEN USED FOR ALLOCATED SIZE	26	21	21	21	21	21	21	16	11
Note – As the block is a casual loose shape it can be used for smaller or larger sizes with less or more ease as indicated above.									
BLOCK HIPS	101 - USE THE XS FOR MORE EASE	101	106	111	116	121	126	126 - USE THE 2XL FOR LESS EASE	126 - USE THE 2XL FOR LESS EASE
SIZE CHART HIPS	83	88	93	98	103	108	113	118	123
EASE WHEN USED FOR ALLOCATED SIZE	18	13	13	13	13	13	13	8	³ • MAY BE TOO TIGHT

If you decide to use the basic block for a larger size than the one suggested the fit of the final garment will be tighter, as there is plenty of ease in this style the block can be used for larger sizes as long as the fit is what you desire.

Of course the opposite works if you choose to use the block for a smaller size, this will result in a looser, oversized fit.

Please see your block sheet for a larger clearer image of this chart

SIZE LINE KEY	
SIZE8UK/4USA	
SIZE10UK/6USA	
SIZE12UK/8USA	
SIZE14UK/10USA	
SIZE16UK/12USA	
SIZE18UK/14USA	

Your basic bodice block comes in a range of sizes as illustrated above. If you would like a more fitted bodice block then please choose a smaller size option. For example, a size 8 basic block will fit a size 8 BODY MEASUREMENTS with the ease intended by the block designer at the bust, waist and hips. If the same block is used for a larger set of body measurements, for example a size 10 body measurements, the block will be more fitted on the wearer.

The ease present in the block allows the block to fit a different set of measurements within its limits, in the case of this casual style the limits are wide.

FEATURES OF YOUR BASIC BODICE BLOCK

Your basic bodice block has been designed with a relaxed, oversized fit in mind, which is traditional for a basic hoody block.

The block can also be used as a jacket block with a center front zip.

The block comes with 2 hood designs, feel free to adapt these as required.

The block is drafted to the hip which is estimated to be 20 cm below the waist.

Please see the following pages for more details regarding the individual pattern pieces.

Please also note that basic blocks do not have seam allowance added.

It is essential that you make and fit a toile before beginning any pattern cutting with your basic blocks.

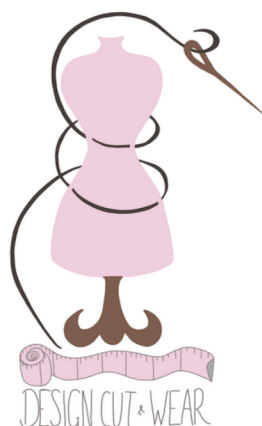
Please see this very important post -

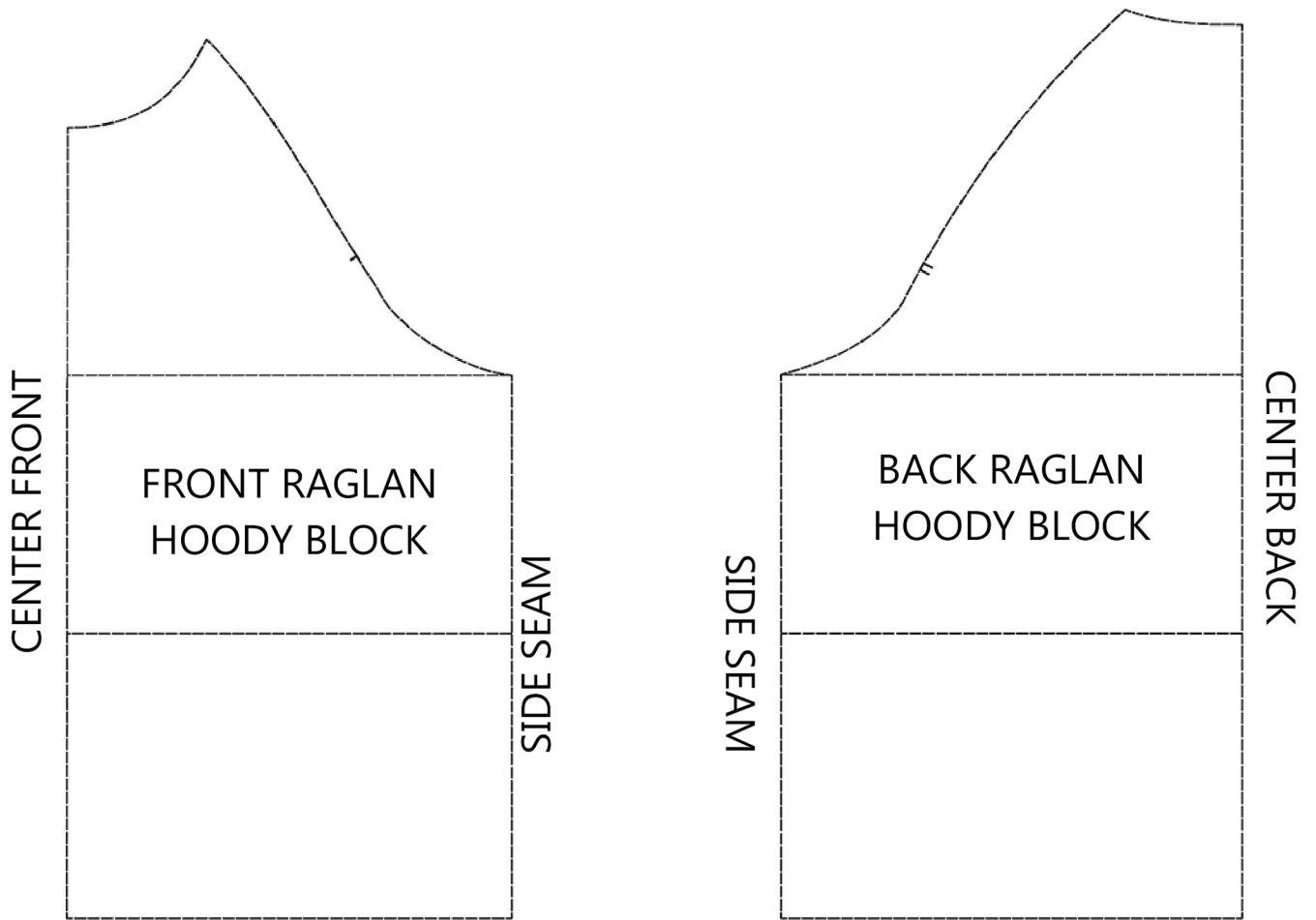
[Making & Fitting a Toile](#)



WORKING WITH THE BASIC BODICE BLOCK

Here you will find some detailed information to help you work with your new basic block (sloper).

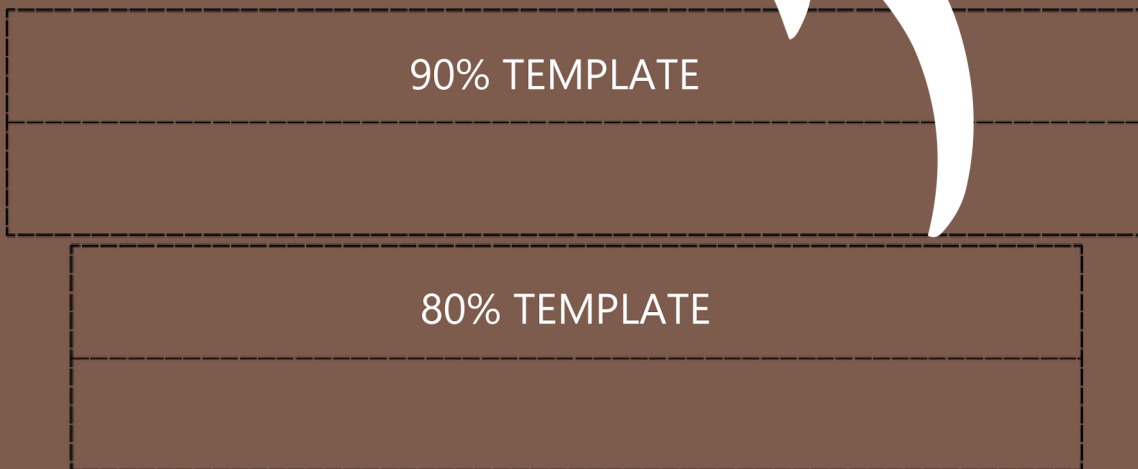




While the blocks have been drafted along side each other they should be traced and separated at the side seam when creating each piece



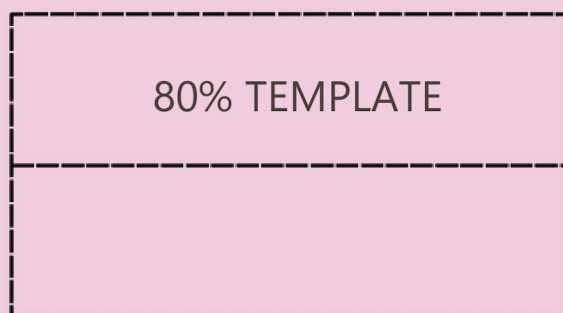
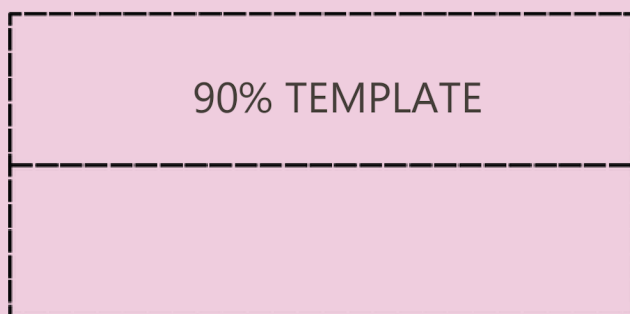
THE HEM BAND TEMPLATES



The block has been supplied with 2 hem band templates. One is reduced to 90% of the original hem circumference and would be suitable for more stable jersey fabrics.

The second option has been reduced to 80% of the original hem circumference and would be suitable for a softer ribbing finish.

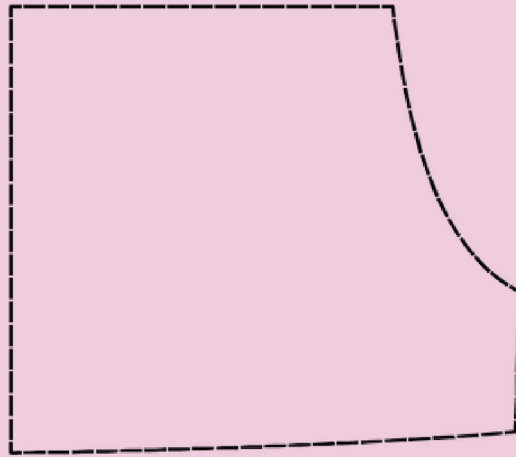
Please note these templates are provided as a starting point and each fabric will require assessment when creating your toile



The block has been supplied with 2 cuff band templates. One is reduced to 90% of the original sleeve hem circumference and would be suitable for more stable jersey fabrics.

The second option has been reduced to 80% of the original hem circumference and would be suitable for a softer ribbing finish. Please note these templates are provided as a starting point and each fabric will require assessment when creating your toile

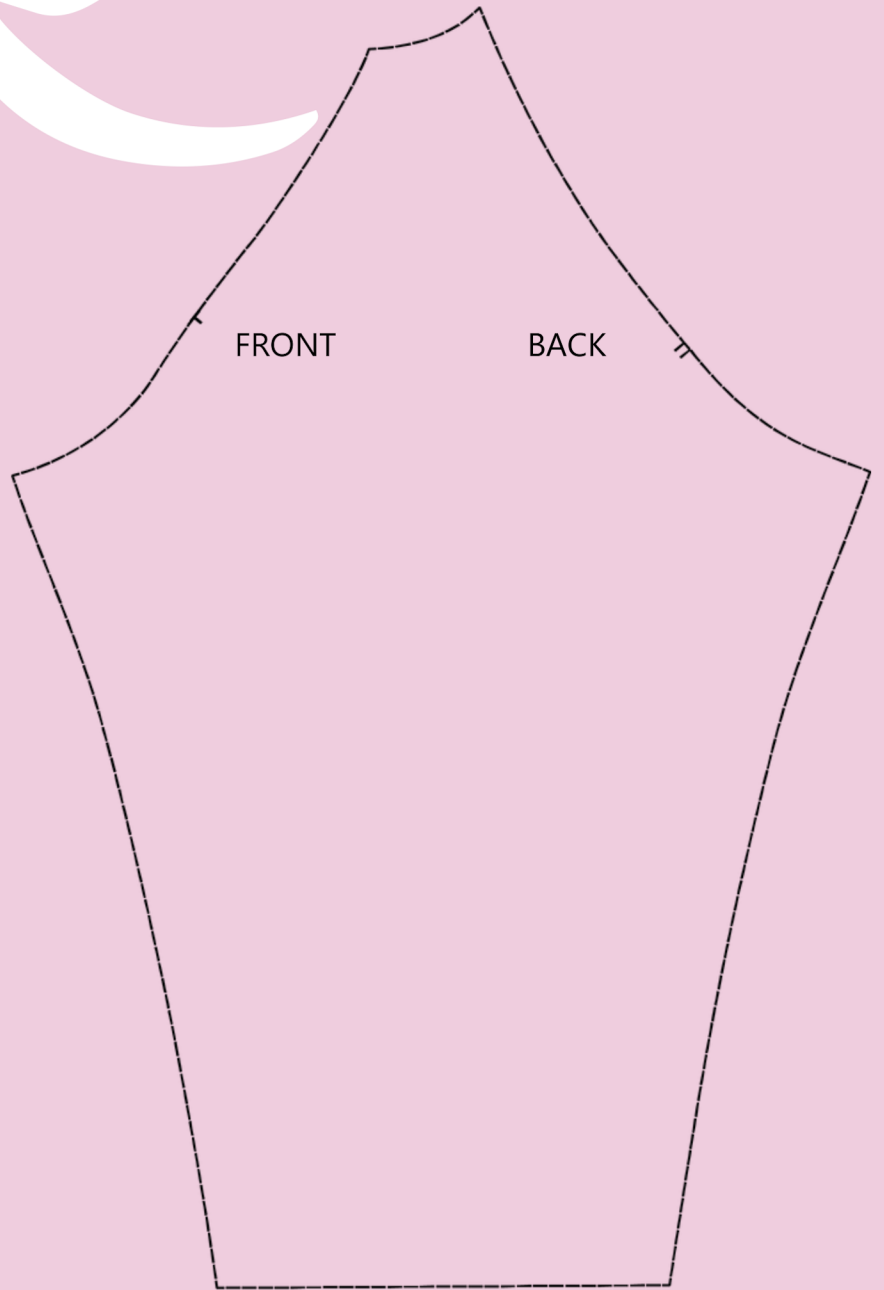
POCKET TEMPLATE



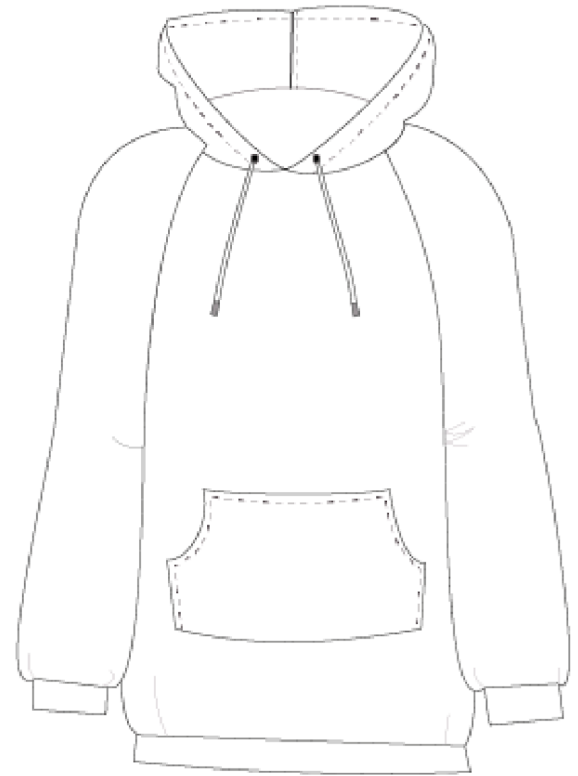
Please mirror the pocket template to create a whole shape
feel free to adapt as required



The raglan sleeve style is unique as it incorporates some of the upper body part around the shoulder area into the sleeve



The block comes with 2 hood options



The traditional hood option overlaps at the center front for a neat finish



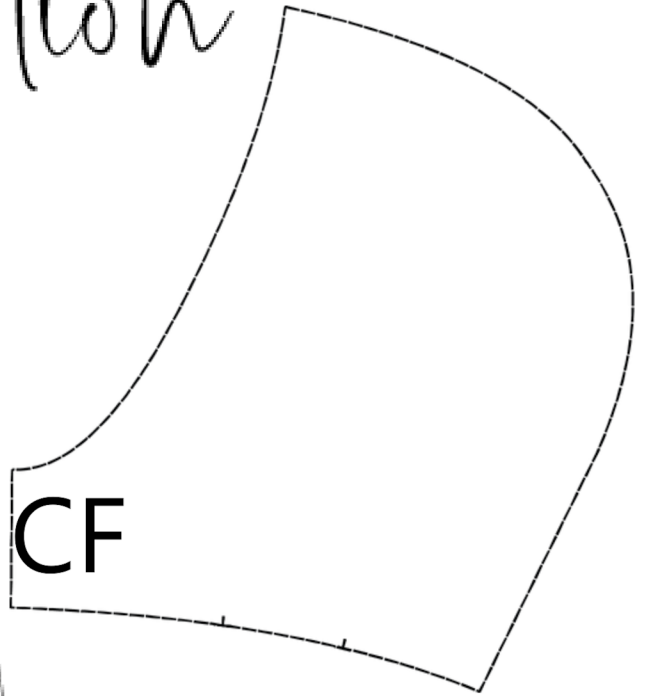
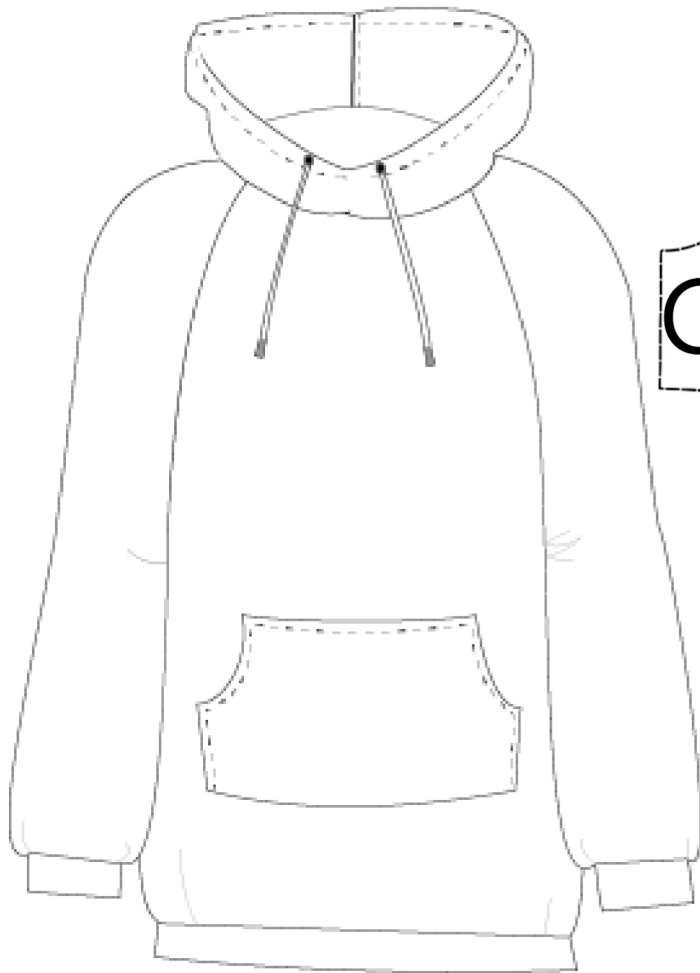
Ease this hood shape to the neck

cf notch

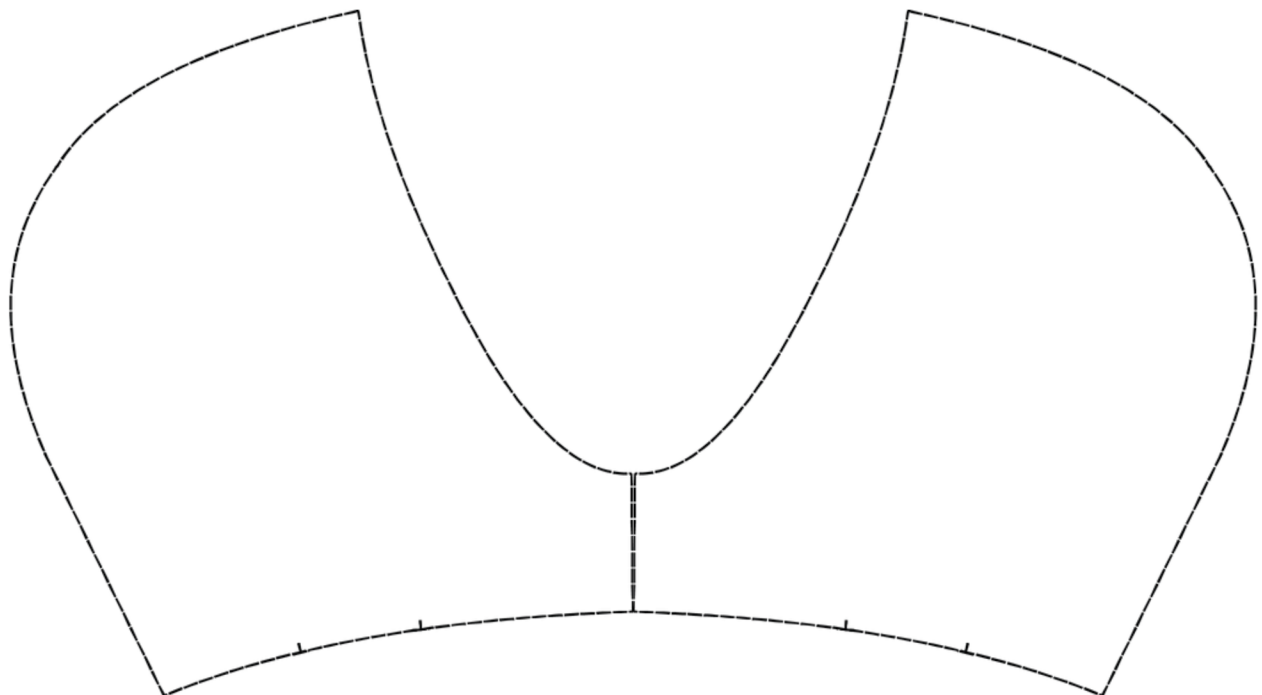




Style Suggestion



This hood design can be mirrored at the CF to eliminate the seam



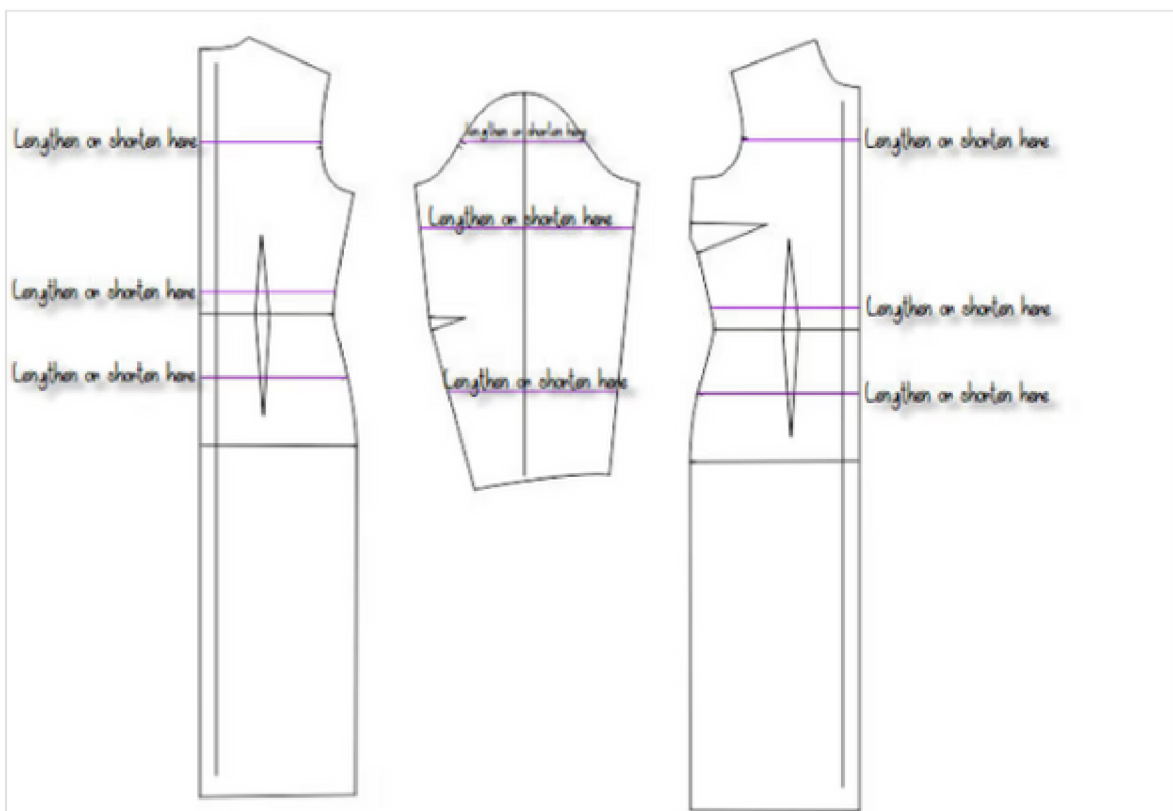
BE CREATIVE!

FEEL FREE TO
ADJUST THE BASIC
BLOCK SHAPES TO
SUIT YOUR DESIGN
NEEDS



WHAT IF I AM TALLER OR SHORTER THAN THE BLOCK MEASUREMENTS?

[lengthening or shortening lines on a pattern or block](#) blog post



Lengthening and Shortening Lines on a Pattern or Block

What should you do if you are shorter or taller than the pattern or block measurements? We are not all the same size or shape, even bodies with the same girth measurements can be completely different...

🕒 Modeliste Creative / Mar 15, 2018

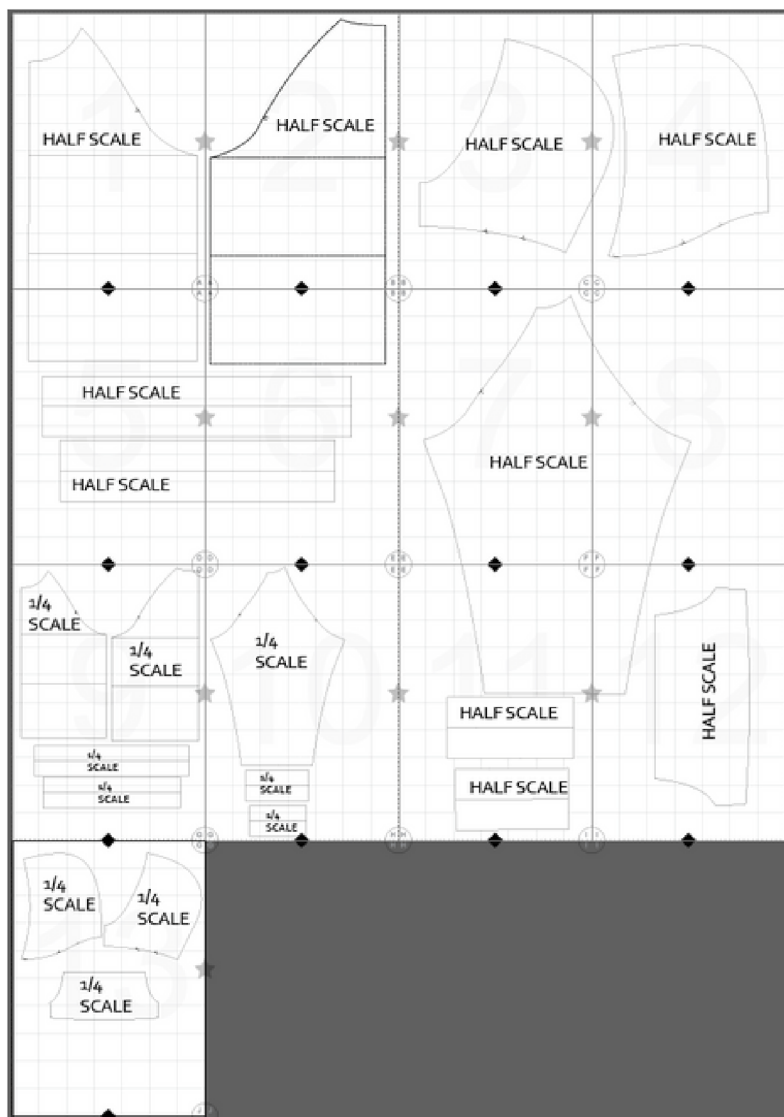
You will find a detailed post on my blog page to help you with this!

FREE 1/4 AND 1/2 SCALE BLOCK

Half and 1/4 scale blocks are perfect for practice. I use them all the time with my University student and they are a valuable tool!

If you purchased the PDF or digital versions of the blocks you will find these blocks as a separate PDF file in your downloads area too.

If you have purchased the physical version of the blocks you can find a free file in the members area of my blog page.



LEAVING ME AN ETSY REVIEW



I am a tiny business, it's just me here so please let me know if you need any extra help at all. I am happy to answer any questions and help in any way I can.

If you get a moment to leave a review that would be amazing for my shop.

The reviews customers leave for sellers on Etsy are critical to sellers' shops and business. They are essential for them to remain visible and in good standing on the platform.

If you feel things are not quite right, please let me help.

While I hope to always provide an excellent service, there is always a possibility that I may have missed something. If this is the case during your order, please send me a private message so that I can address any problems you may have, it is always best to communicate with the seller and allow them the opportunity to resolve any issues before leaving a review that may damage a tiny business.

On many other platforms any rating below a 5 is considered below standard. While I realise a 4-star rating on certain platforms is considered decent, it is considered very poor on Etsy which judges such ratings harshly. Unfortunately, Etsy Awards are based on 5 star reviews and sellers will sadly lose their STAR seller awards when they receive less than a five star review.

I would highly appreciate an overall 5 star rating. If you feel I do not deserve a 5, please do not leave a review and send me a note as to how I can improve things for you and allow me the chance to earn a 5 star review, if possible. My philosophy is one of continuous improvement and I will do all I can to help my customers and solve any problems they may encounter.

As most Etsy sellers strive for excellent customer service and are customer focused the culture within Etsy is one of mutual support between the valued customer and the Etsy seller.

In addition to the many years of experience and expertise that have gone in to creating the products I have sent you; you also have access to my blog where you will find lots of information to support my products. I am also always here to answer any questions and am always happy to help.

You can find my blog at www.modelistecreative.com and my YouTube Chanel at:

<https://www.youtube.com/@ModelisteCreative>

You can also e-mail be directly at onitnotinit@mail.com

Thank you for being a customer and for allowing me the chance to help if required.

Kindest regards,
Nicola

Connect with me on social media...



@design_cut_and_wear

www.facebook.com/designcutandwear



I also have a dedicated facebook group to support creative pattern cutting!

Pattern cutting and design group link.

<https://www.facebook.com/groups/4229406317093311/>



www.youtube.com//modelistecreative



www.pinterest.co.uk/ModelisteCreativeBlog



www.modeliste-creative.com

SOME USEFULL POSTS ON MY BLOG

You will find lots of information on my blog page to help you work with my basic blocks, here are a selection of posts that will help.

www.modelistecreative.com

- [WHAT IS NECK WIDTH AND HOW DOES IT AFFECT BUST FIT](#)
- [FITTING THE LARGER AND SMALLER BUST - FBA - SBA](#)
- [WORKING WITH YOUR BASIC BLOCKS - SLOPER - GUIDE TO CREATING A TOILE](#)
- [EASING A SLEEVE HEAD INTO AN ARMHOLE - PROFESSIONALLY](#)
- [MOVING A BODICE DART INTO THE NECKLINE](#)
- [THE FRENCH DART](#)
- [SIZING - THE MYTHS AND LEGENDS](#)
- [PART 3 - MOVING DARTS](#)
- [PART 2 - MOVING DARTS](#)
- <https://modelistecreative.com/2019/04/08/bodice-dart-manipulation-part-2-both-darts-at-the-waist/>
- <https://modelistecreative.com/2019/04/06/my-latest-video-part-1-is-now-available/>
- <https://modelistecreative.com/2018/12/19/adjusting-fit-at-the-bust-part-1-bust-level-and-bust-point-apex/>
- <https://modelistecreative.com/2018/12/22/how-to-locate-the-bust-point-apex-on-a-pattern-part-2-fitting-at-the-bust/>
- You will also find lots of helpful videos on my YouTube channel
<https://www.youtube.com/@ModelisteCreative>

