



Modeliste Creative
Professional Patterns & Blocks



Perfect for scooping up long hair!

Wide Headband
PDF Pattern & Sew along!



Modeliste Creative

Professional Patterns & Blocks

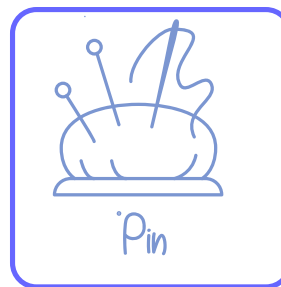
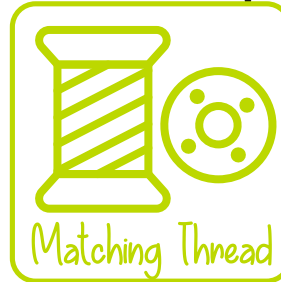
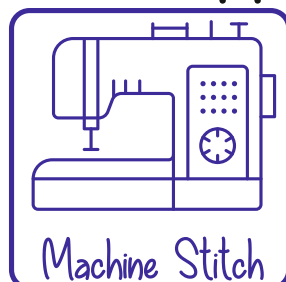
- Materials and Trimmings -

The wide jersey headband project:



1 piece of patterned jersey-
enough to make 1 wide
headband - see overleaf
for exact quantities.

You will need - Supplies & Equipment



Plus your pattern printed out

Making Instructions

You will need:

fabric piece cotton jensey - 75cm wide x 50 cm deep (29 1/2" x 19 1/16") tip Buy 1/2 a meter or half a yard of 150 cm (59")wide fabric and make 2 headbands!

Matching Thread

To assemble

1. Print out and compile your PDF Pattern
2. Cut out 4 Pieces of the pattern piece as pains

I made 2 copies of the pattern piece so I could cut out 4 at once on a double layer



Cut out 4 pieces in total - plan shows the fabric as 2 layers

Contact us at: Modeliste-Creative@mail.com
or visit our website: www.modeliste-creative.com

Onitnotinit Ltd ©2016

3. Place the pairs of pieces - with the right sides of the fabric together and sew along the curved edge taking 1 cm seam allowance - Use a stretch stitch on a slight zig zag if possible.



4. Open up the joined pieces and press the seams, trim down if you prefer

5. Open up the joined pieces place the pieces with right sides together and sew around the edges of the shape, taking 1 cm seam allowance. Leave a small gap for turning through!



Contact us at: Modeliste-Creative@mail.com
or visit our website: www.modeliste-creative.com

Onitnotinit Ltd ©2016

6. Turn through the small hole you have left and open out, smooth with your hands into position and then press.



Hand stitch the opening closed and wear!

? Try on! Make as many as you like - I don't mind the items made from my patterns being sold - its just the pattern I like to protect - so feel free to go into production!



Modeliste Creative

Professional Patterns & Blocks



Modeliste Creative

Professional Patterns & Blocks



1 cm seam
allowance added
Cut 4 Pieces as 2 pairs

DOGS - Direction of greatest stretch



Pattern suitable for jersey stretch fabric

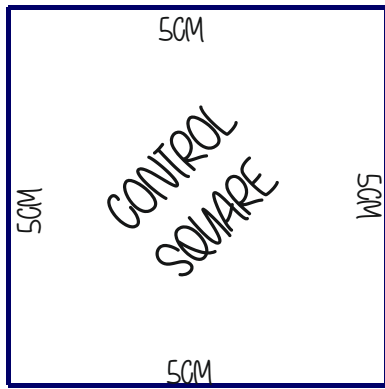


Modeliste Creative

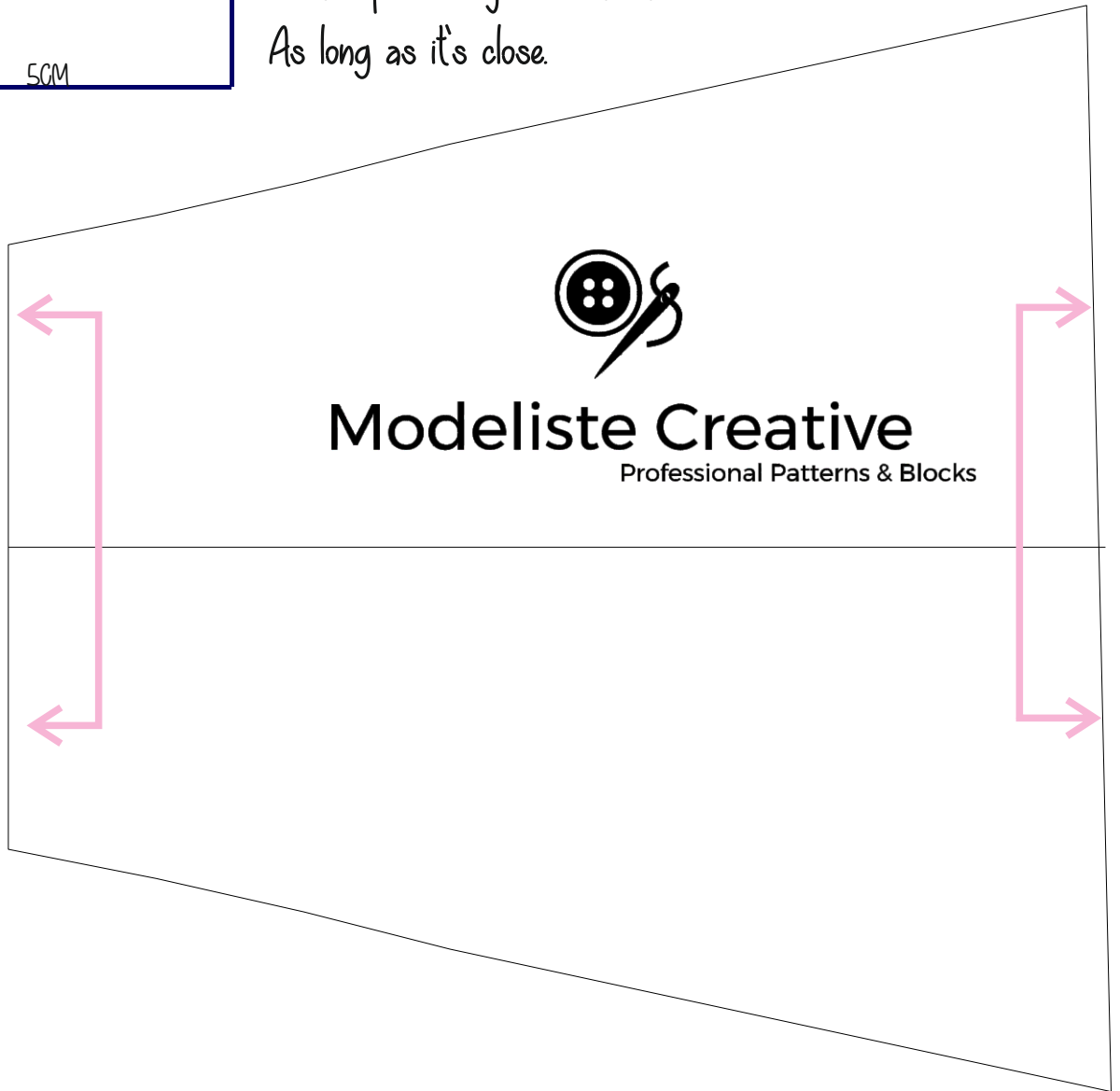
Professional Patterns & Blocks

Contact us at: Modeliste-Creative@mail.com
or visit our website: www.modeliste-creative.com

Onitnotinit Ltd ©2016



Don't worry if your measurements are not quite 5 cm with this pattern this is not a critical measurement as the piece only sews to itself As long as it's close.



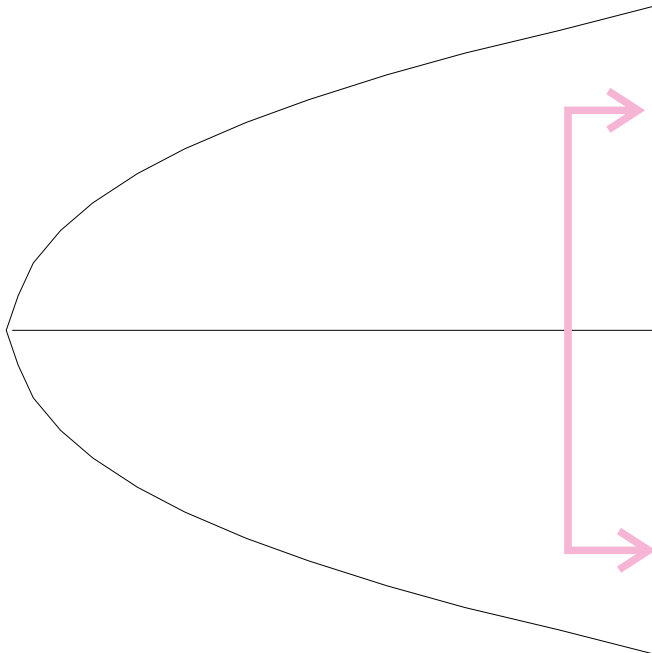
Contact us at: Modeliste-Creative@mail.com
or visit our website: www.modeliste-creative.com

Onitnotinit Ltd ©2016

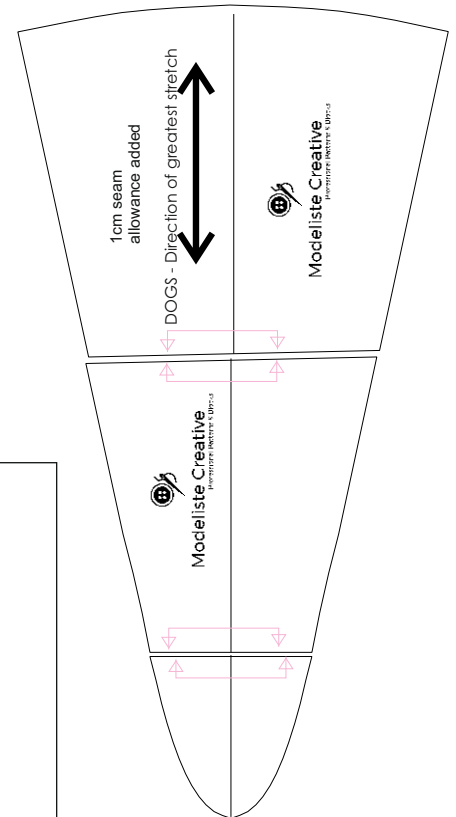
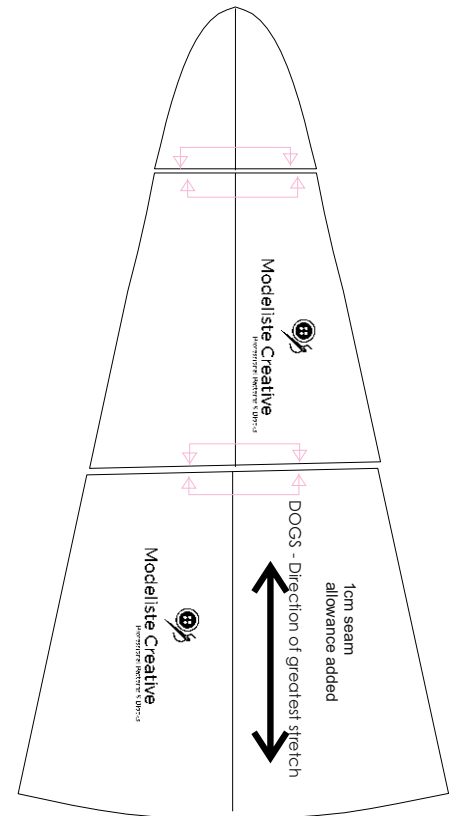


Modeliste Creative

Professional Patterns & Blocks



Join all three pieces as in the plan above
Then cut 4 out in knit fabric



Contact us at: Modeliste-Creative@mail.com
or visit our website: www.modeliste-creative.com

Onitnotinit Ltd ©2016