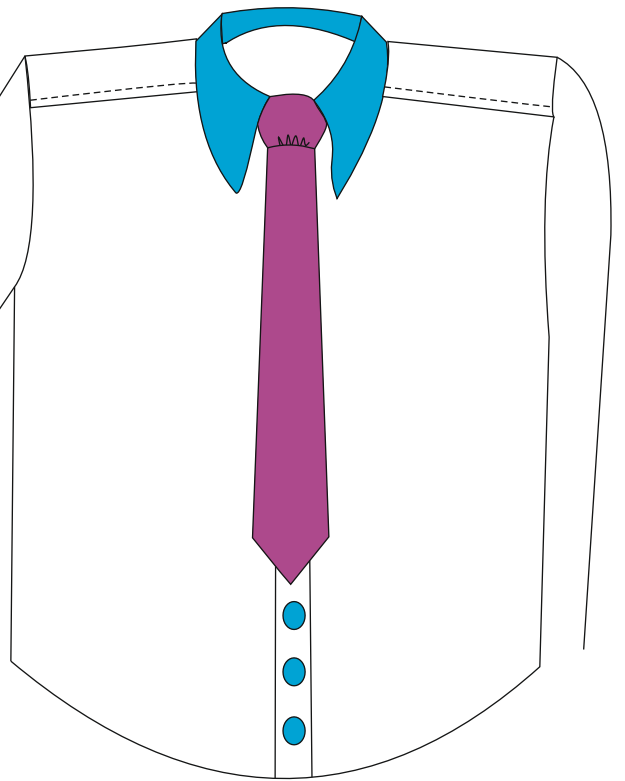


Design Cut & Wear - Patterns & Blocks

Tie Project



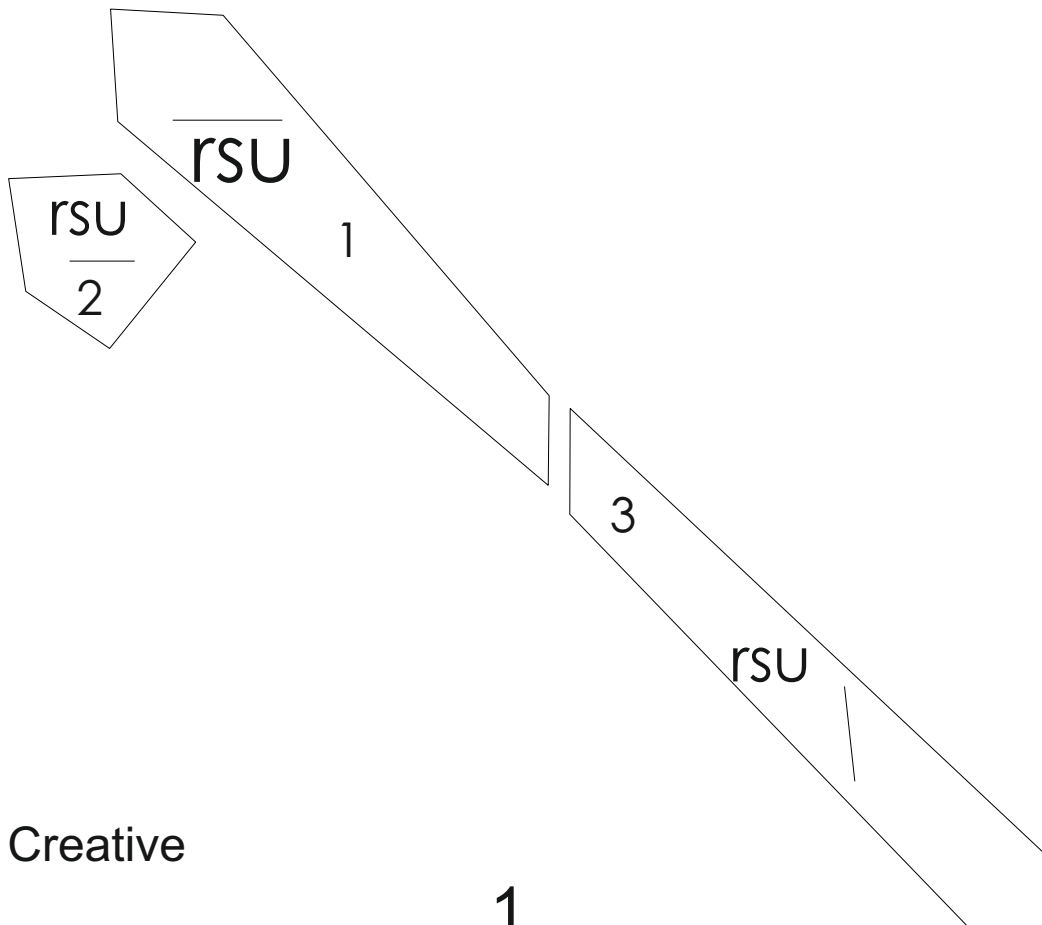
PATTERN SECTIONS

- 1 - Top tie piece
- 2 - Tie lining piece
- 3 - Tie under piece

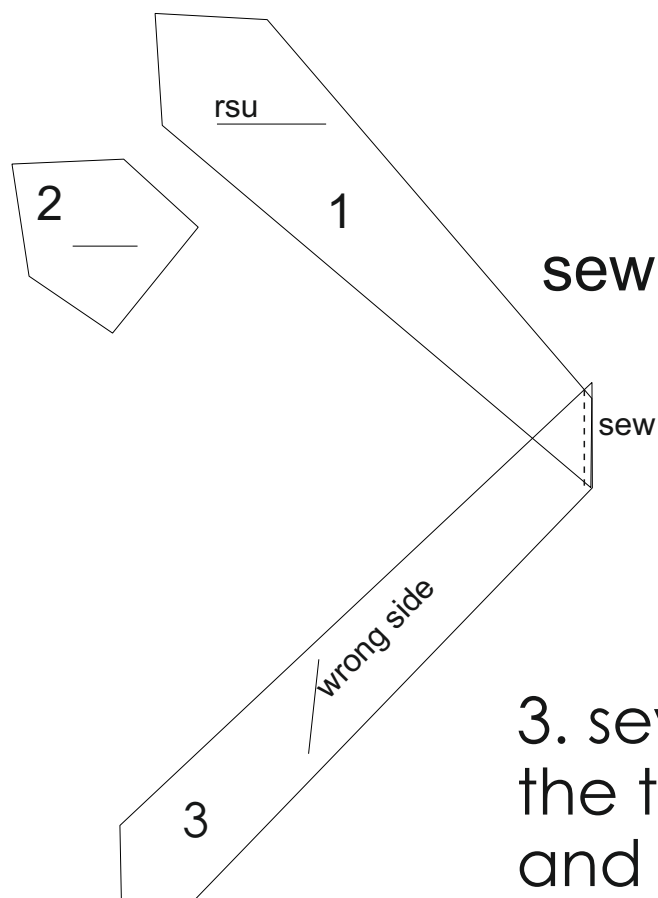
CODE

RSU - Right Side Up
WSU - Wrong Side Up
SA - Seam Allowance
The bias grain is 45 degrees to the selvedge of the fabric.

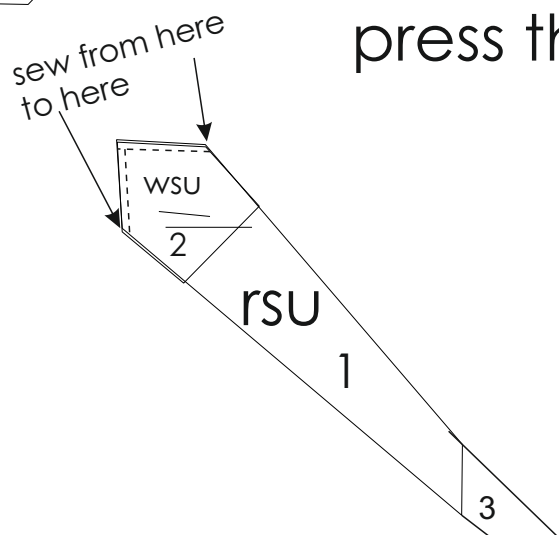
1. Cut 1 top tie on the bias grain and one tie under piece on the bias grain. Cut 1 tie lining piece. Also cut one tie inner section if required.



2. Place right sides together and sew the upper and under tie sections together - Open and press the seam gently with the tip of the iron.



3. sew the lining section to the top tie where indicated and then turn through and press the edges lightly.

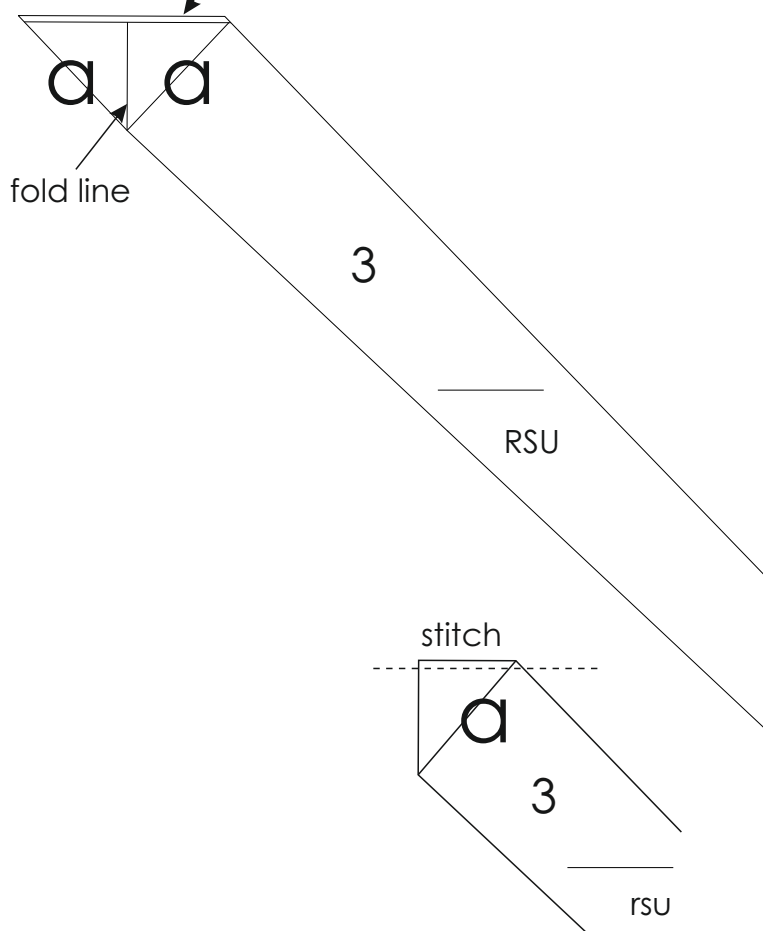


4. How to sew the grown on facing under piece

fold **a** to **a** on the fold line and stitch along the seam allowance edge taking a seam of 0.5cm.

Turn through to create the grown on facing

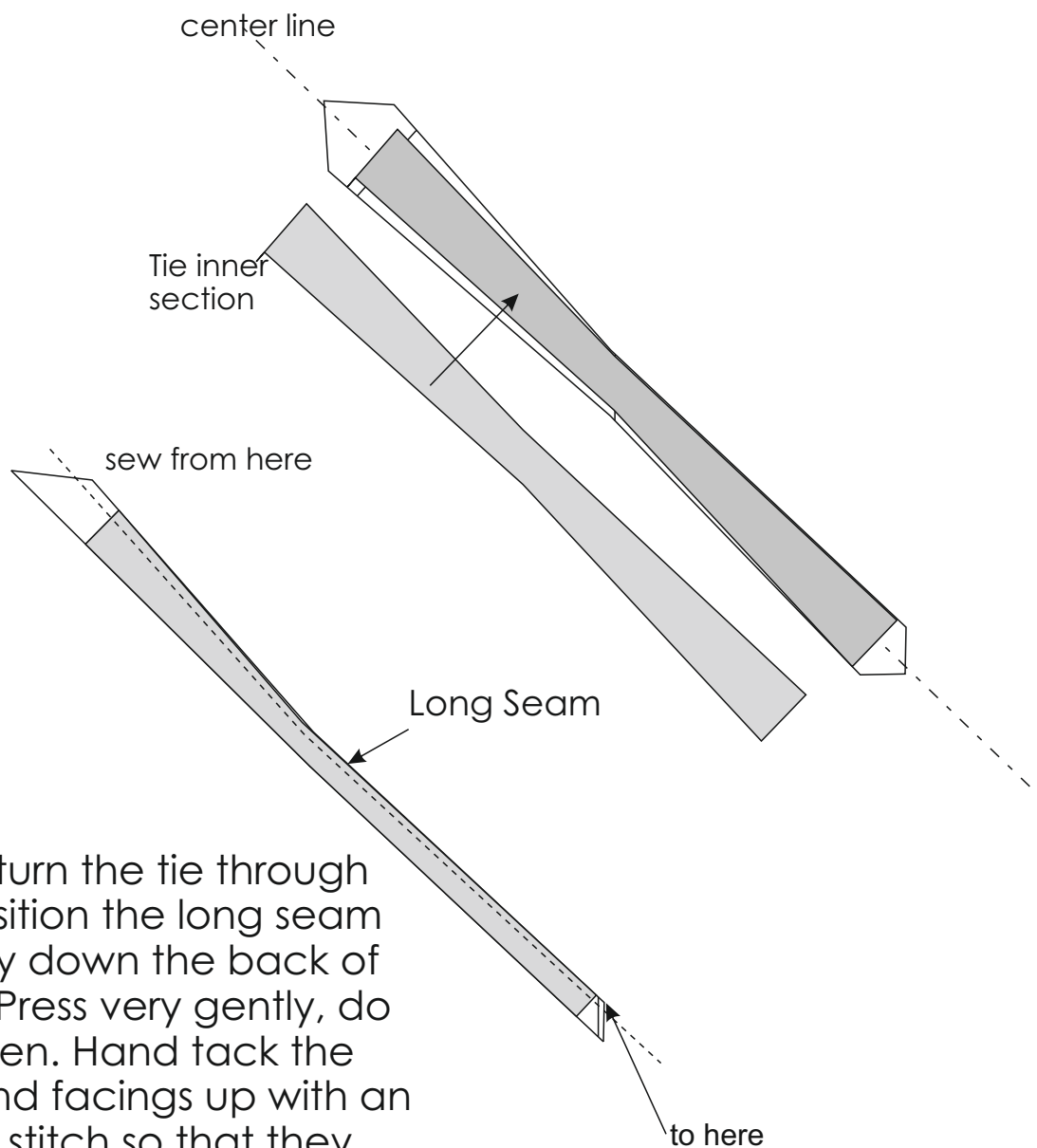
SEAM ALLOWANCE EDGE



Modeliste Creative

©2014

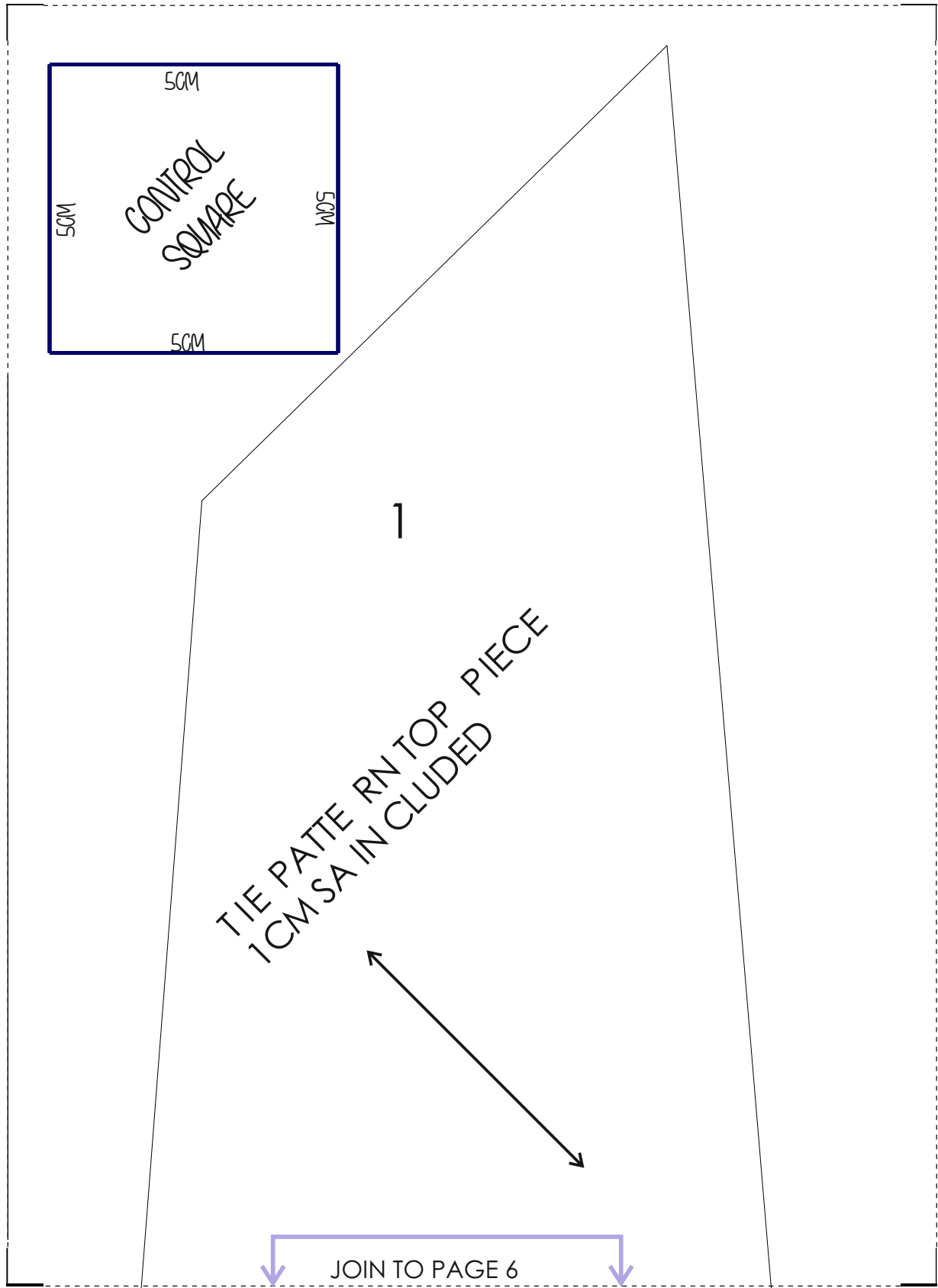
- 5 Place the tie inner section (if you are using one) down the center of the tie carefully - then fold the tie in half gently down the center line and carefully sew the long seam length just catching the tie inner section in the stitching if one is being used, if not simply sew down the long seam length back tacking at each end.



6. Now turn the tie through and position the long seam centrally down the back of the tie. Press very gently, do not flatten. Hand tack the lining and facings up with an invisible stitch so that they do not fall down.

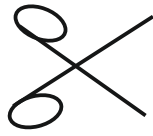
NOTE Never press a tie flat, it only needs a gentle steam to ensure it keeps its life and body.

Modeliste Creative



Modeliste Creative

©2014



JOIN TO PAGE 5

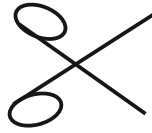
CUT ONE IN TIE
FABRIC

1

JOIN TO PAGE 7

Modeliste Creative

©2014



JOIN TO PAGE 6

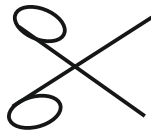
1

TIE PATTERN TOP PIECE
1CM SA INCLUDED

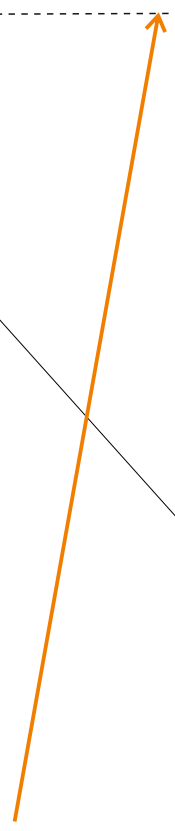
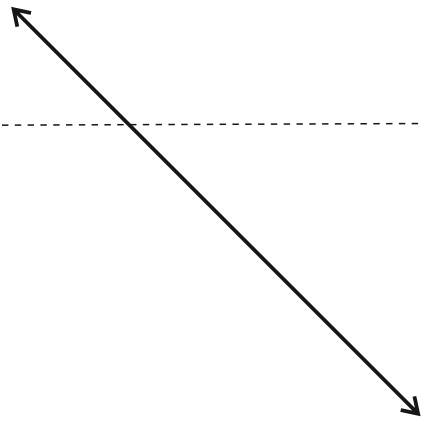
JOIN TO PAGE 8

Modeliste Creative

©2014



↑ JOIN TO PAGE 7 ↑

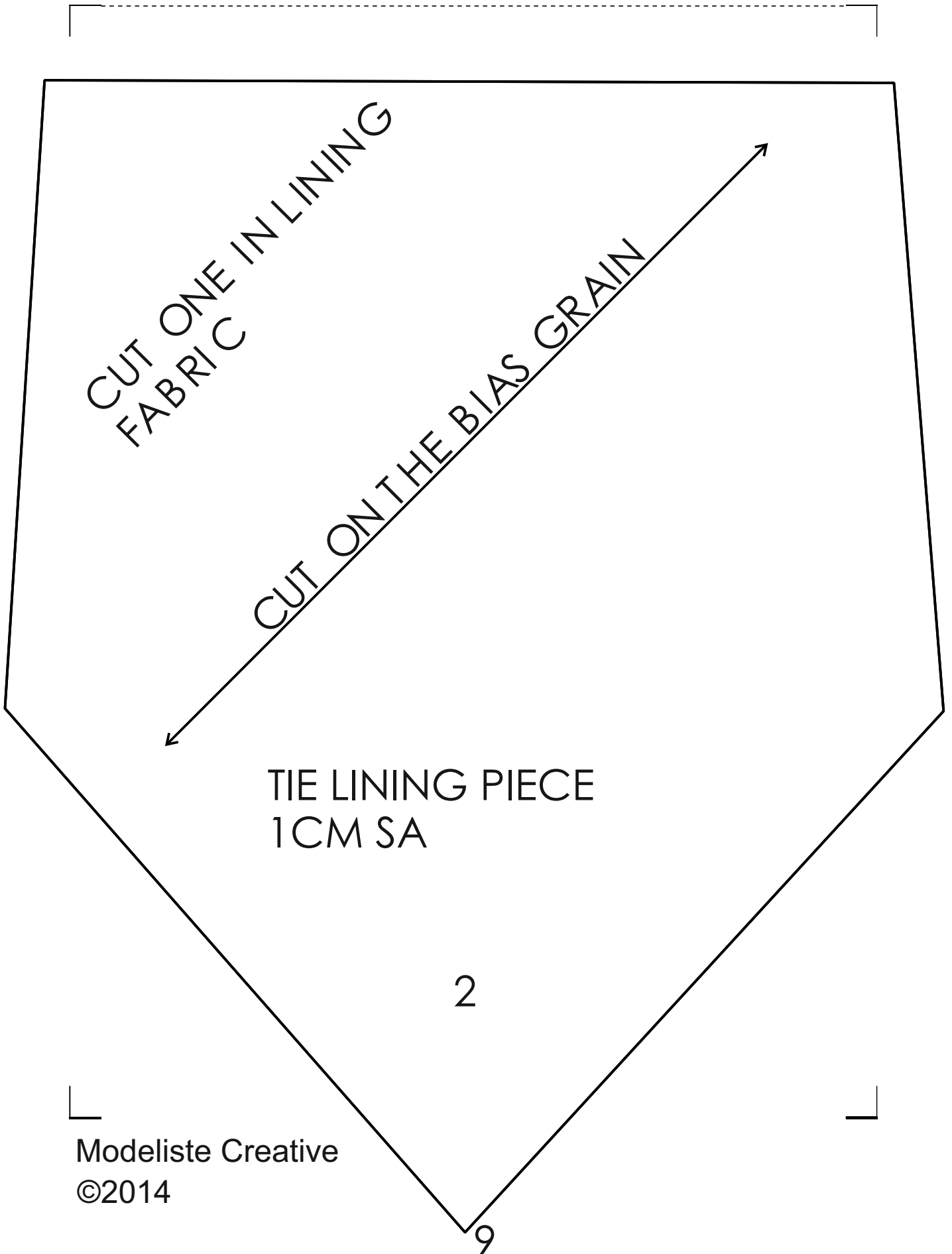


1

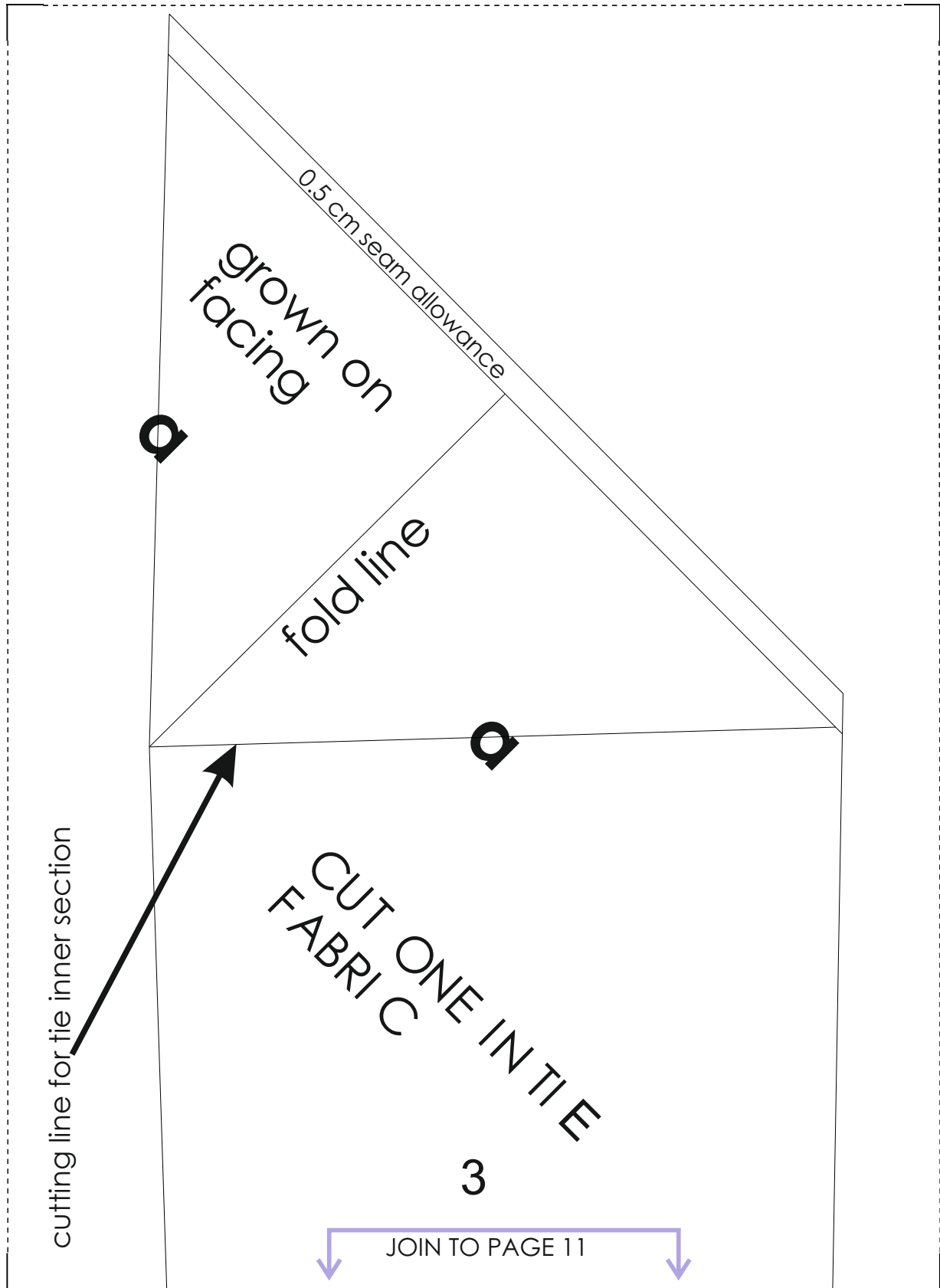
cutting line for tie inner section - Use a tie inner section when your tie fabric is particularly fragile, for example if you are using a very light weight silk. Then use a light muslin to give the tie body and weight. Cut to the line indicated and also trim along the long seam edge so that the tie inner is slightly narrower than the tie fabric but is able to be caught into the long seam when sewn so it does not create too much bulk

Modeliste Creative
©2014

Modeliste Creative

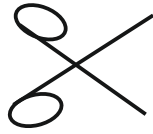


Modeliste Creative



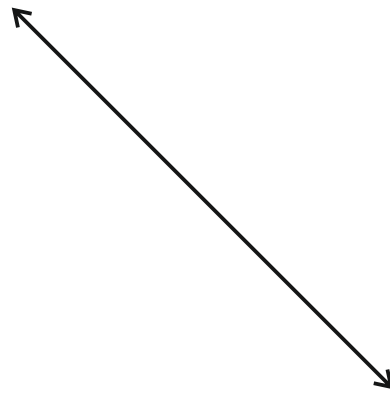
Modeliste Creative

©2014

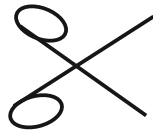


JOIN TO PAGE 10

3



JOIN TO PAGE 12

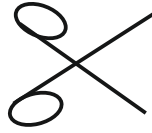


JOIN TO PAGE 11

3

CUT ON THE BIAS
GRAIN

JOIN TO PAGE 13



↑ JOIN TO PAGE 12 ↑

TIE PATTERN UNDER
PIECE
1 CM SA

3

Contact us at: Modeliste-Creative@mail.com
or visit our website: www.modeliste-creative.com

Visit our blog page modelistecreative.com for much more!

Modeliste Creative

©2014